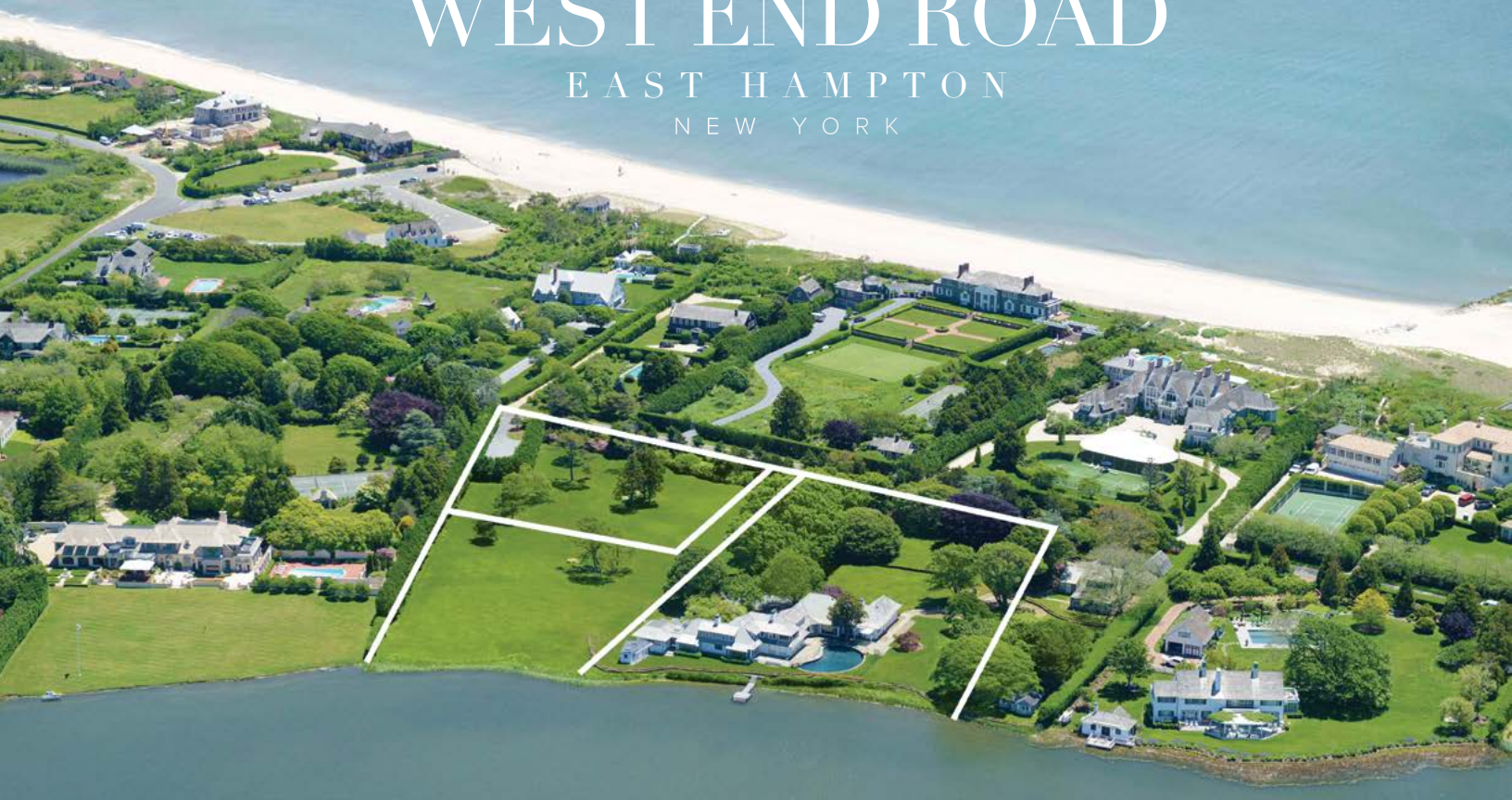


# 20, 24, 26 WEST END ROAD

EAST HAMPTON  
NEW YORK



*The opportunity has presented itself to own  
three contiguous waterfront parcels on one of the  
world's preeminent streets, West End Road.*



**BESPOKE**  
REAL ESTATE





THE OPPORTUNITY HAS PRESENTED ITSELF TO OWN  
THREE CONTIGUOUS PARCELS ON ONE OF THE  
WORLD'S PREEMINENT STREETS, WEST END ROAD.





# 20, 24, 26 WEST END ROAD

EAST HAMPTON, NEW YORK

The opportunity has presented itself to own three contiguous parcels on one of the world's preeminent streets, West End Road. With nearly 380 linear feet on Georgica Pond, the compound of properties offer one of the largest water frontages just steps from the ocean. A tree-lined driveway leads to a pedigreed home that is sited for unparalleled vistas down Georgica Pond to the ocean. The home is comprised of ~7,600 sq. ft. including 7 bedrooms and 6 full baths, several fireplaces, and never to be had again waterside gunite swimming pool and dock. Additionally, the dwelling comes with plans in place for a substantial modernization of the structure, currently nonconforming to code as well as accessory structure and tennis capability. The two additional single and separate vacant parcels have all of their due-diligence in place and can be expanded to have two additional homes with accessory structures, perfect for multi-generational planning or left as is with the meticulously maintained specimen plantings and verdant landscaping. This is the pinnacle waterfront compound in all of the Hamptons, taking advantage of two bodies of water while offering optionality, exclusivity, and rarity. By advanced appointment only.

FOLLOW THIS PROPERTY ON INSTAGRAM  
#26WESTENDROADEASTHAMPTON





WITH NEARLY 380 LINEAR FEET ON GEORGICA POND, THE COMPOUND OF PROPERTIES OFFER ONE OF THE LARGEST WATER FRONTAGES JUST STEPS FROM THE OCEAN.



20, 24, 26 WEST END ROAD  
EAST HAMPTON, NEW YORK

\$54,995,000  
EXCLUSIVE WEB ID: 11937

- Waterfront  
Nearly 380 linear feet on Georgica Pond
- Ocean Views
- Steps to Ocean
- 4.44 Acres
- 7,600 SF+/- Home  
The dwelling comes with plans in place for a substantial modernization.
- 7 Bedrooms
- 6 Bathrooms
- Waterside Gunitite Pool
- Dock
- Expansive Lawnspace
- Room for Tennis
- Three Contiguous Parcels  
Vacant parcels have all of their due-diligence in place and can be expanded to have two additional homes with accessory structures.

















NEARLY 380 LINEAR FEET ON GEORGICA POND





CUSTOM GUNITE WATERSIDE POOL







EXPANSIVE LAWNSPACE









PERFECTLY POSITIONED FOR WATERFRONT  
WESTERN FACING SUNSETS





20, 24 WEST END ROAD  
EAST HAMPTON, NEW YORK

\$31,495,000  
EXCLUSIVE WEB ID: 03477

- Waterfront
- Ocean Views
- Steps to Ocean
- 2.80 Acres
- Capability to yield Two New 6,000 - 7,000 SF+/-  
Homes and Accessory Structures
- Expansive Lawnspace
- Room for Tennis





## 26 WEST END ROAD

EAST HAMPTON, NEW YORK

\$23,500,000

EXCLUSIVE WEB ID: 11949

- Waterfront
- Ocean Views
- Steps to Ocean
- 1.64 Acres
- 7,600 SF+/- Home
- The dwelling comes with plans in place for a substantial modernization.
- 7 Bedrooms
- 6 Bathrooms
- Waterside Gunite Pool
- Dock
- Expansive Lawnspace
- Room for Accessory Structure
- Room for Tennis





24 WEST END ROAD  
EAST HAMPTON, NEW YORK

\$18,500,000

EXCLUSIVE WEB ID: 03460

- Waterfront
- Ocean Views
- Steps to Ocean
- 1.60 Acres
- Capability to Yield a New 7,000 SF+/- Home and Accessory Structure





20 WEST END ROAD  
EAST HAMPTON, NEW YORK

\$12,995,000

EXCLUSIVE WEB ID: 03459

- Ocean Views
- Steps to Ocean
- 1.20 Acres
- Capability to Yield a New 6,000 SF+/- Home and Accessory Structure





# SURVEY

20, 24 ,26 WEST END ROAD  
4.44 ACRES

20, 24 WEST END ROAD  
2.8 ACRES

26 WEST END ROAD  
1.64 ACRES

24 WEST END ROAD  
1.6 ACRES

20 WEST END ROAD  
1.2 ACRES

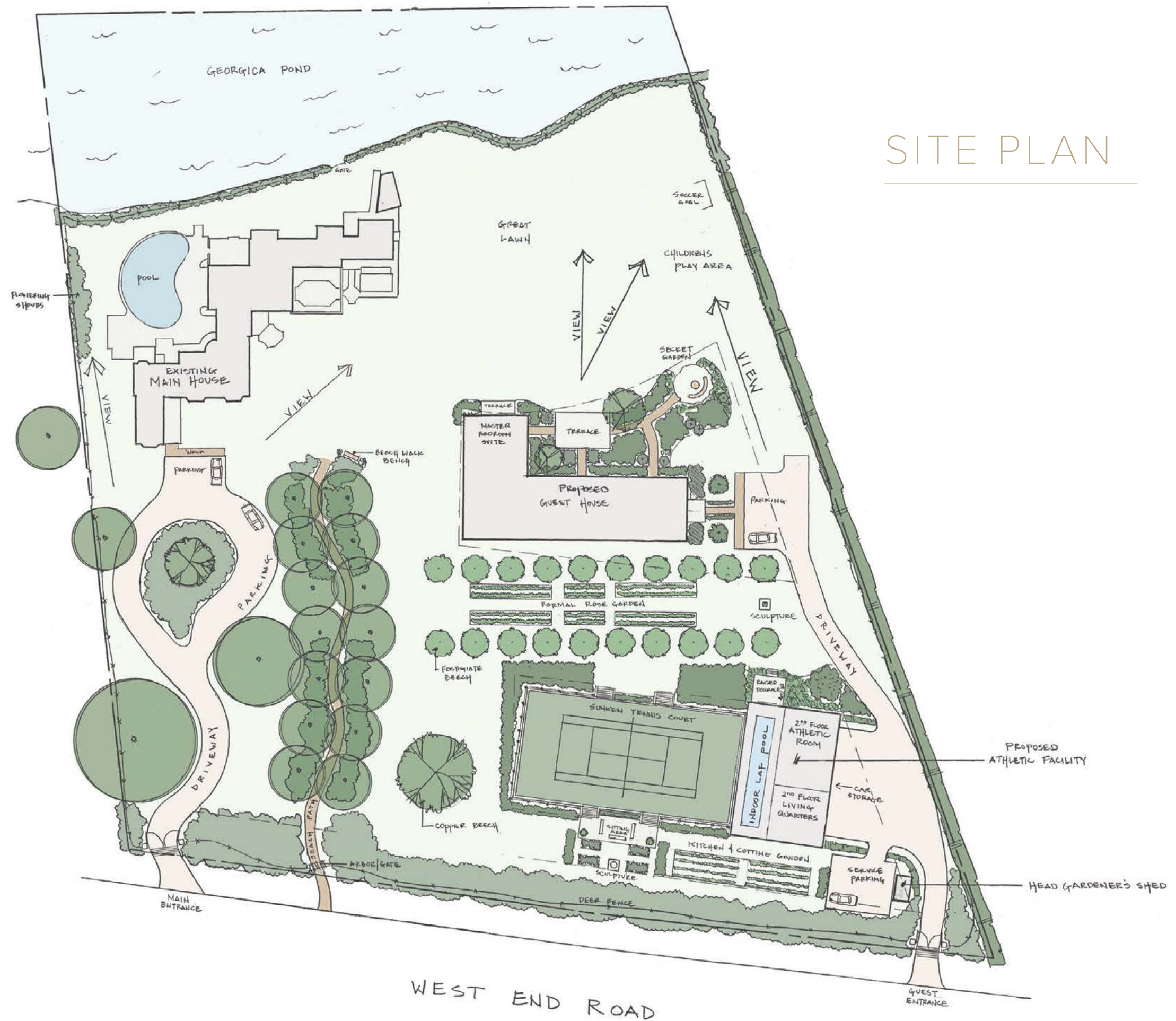








# SITE PLAN







---

*ZACHARY VICHINSKY*

Lic. Real Estate Broker

631.766.0945

[zachary@bespokerealestate.com](mailto:zachary@bespokerealestate.com)

---

*CODY VICHINSKY*

Lic. Real Estate Salesperson

631.926.3948

[cody@bespokerealestate.com](mailto:cody@bespokerealestate.com)

---

*BESPOKE*

R E A L E S T A T E

BESPOKEREALSTATE.COM