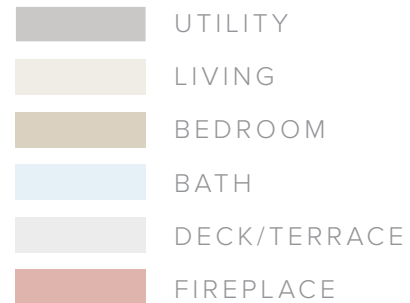
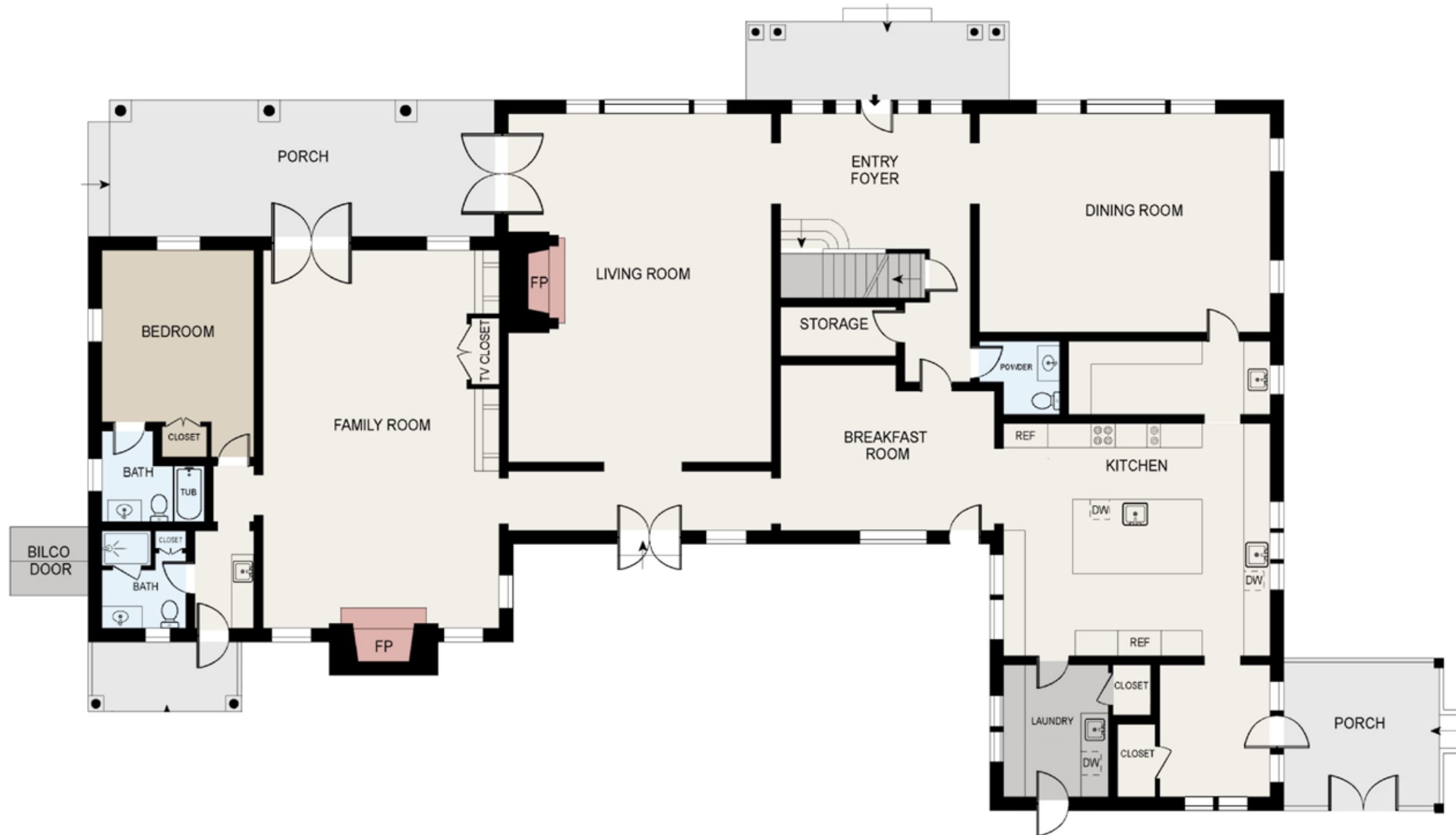


**MAIN RESIDENCE  
FIRST LEVEL**

- Double Height Entry Foyer with Powder Room
- Living Room with Fireplace and Access to Porch
- Mud Room
- Kitchen with:
  - Island Seating
  - Viking Range
  - Butler's Pantry
  - Breakfast Room
- Dining Room with Butler's Pantry and Wet Bar
- Family Room with Fireplace and Access to Porch
- Bedroom with Closet and Full Bathroom
- Laundry Room
- Pool Bathroom



**MAIN RESIDENCE  
SECOND LEVEL**

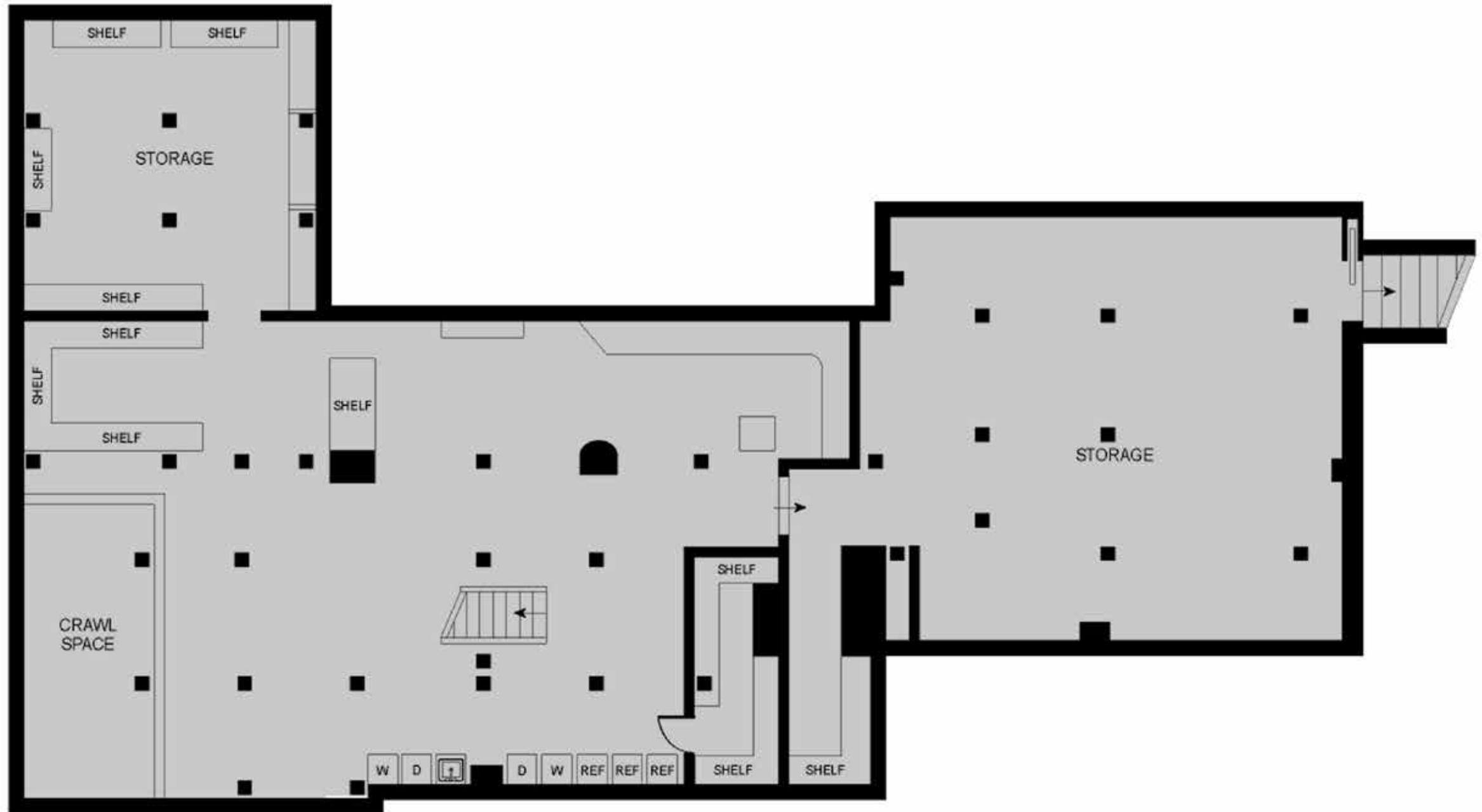
- Master Bedroom with:
  - Fireplace
  - Walk-in Closet
  - Bathroom with Soaking Tub, Shower, and Water Closet
- 3 Guest Bedrooms with Full Bathrooms
- Study with Full Bathroom (Optional 6th Bedroom)



- UTILITY
- LIVING
- BEDROOM
- BATH
- DECK/TERRACE
- FIREPLACE

MAIN RESIDENCE  
LOWER LEVEL

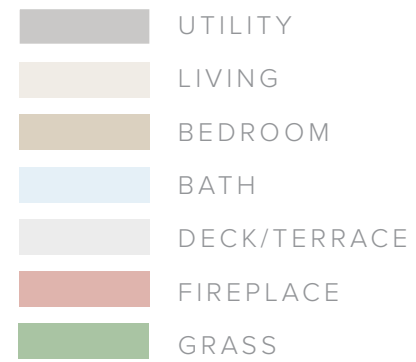
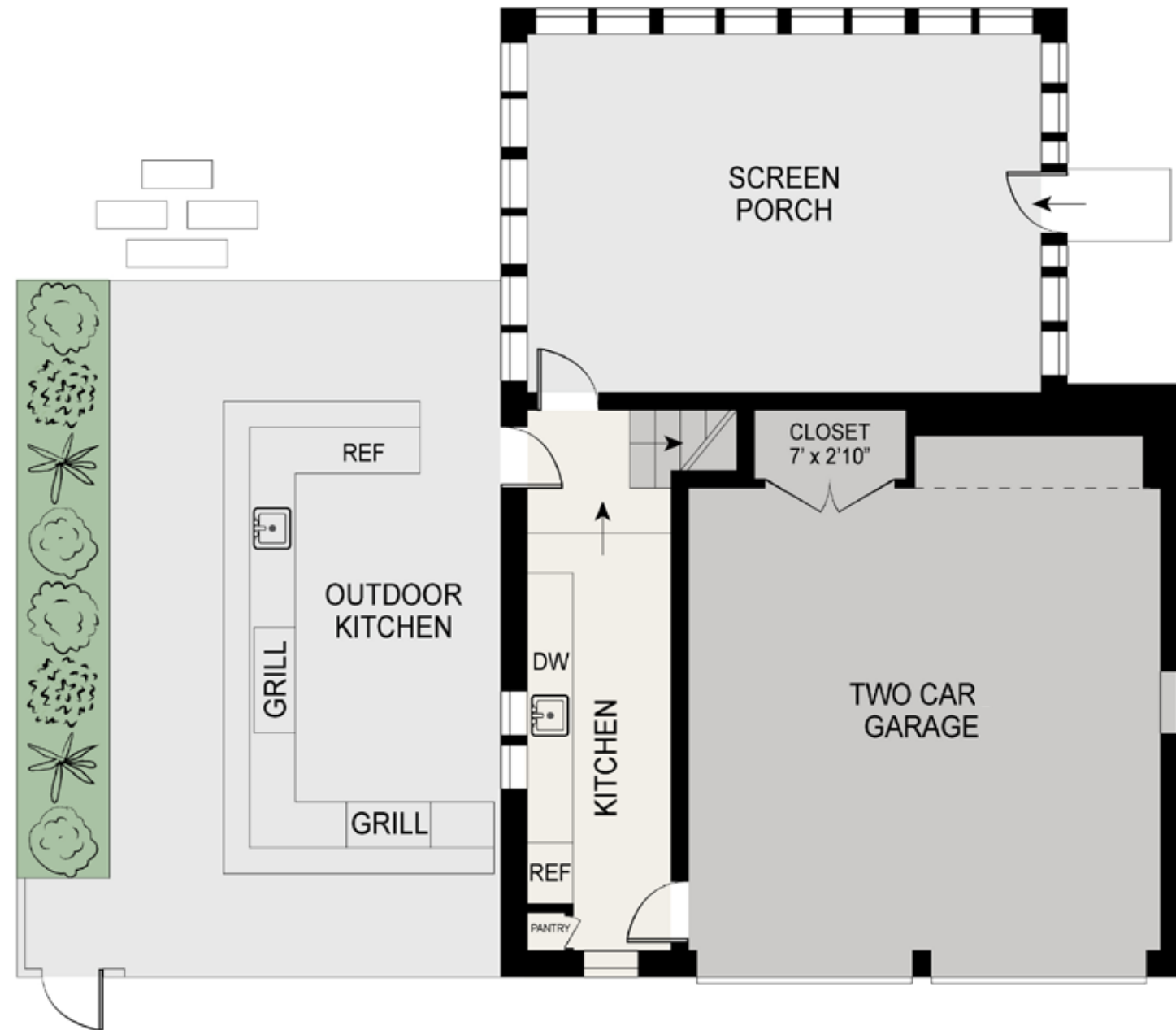
- Laundry
- Storage
- Crawl Space



- UTILITY
- LIVING
- BEDROOM
- BATH
- DECK/TERRACE
- FIREPLACE

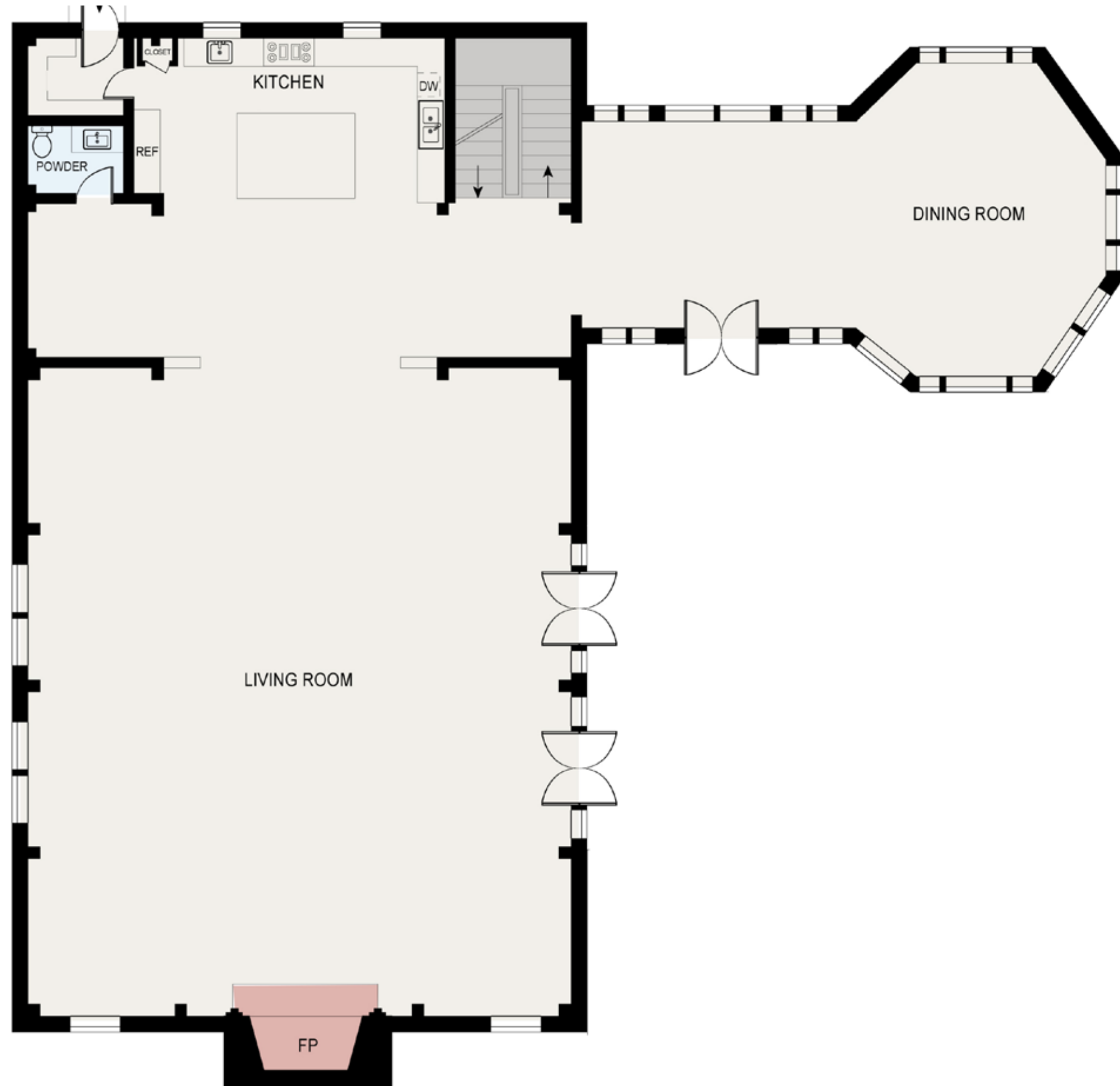
## POOL HOUSE

- Built in 2012
- 1,616 SF+/-
- Kitchenette
- Studio Loft
- Full Bathroom
- Screened-in Dining Porch
- Outdoor Kitchen with Grill

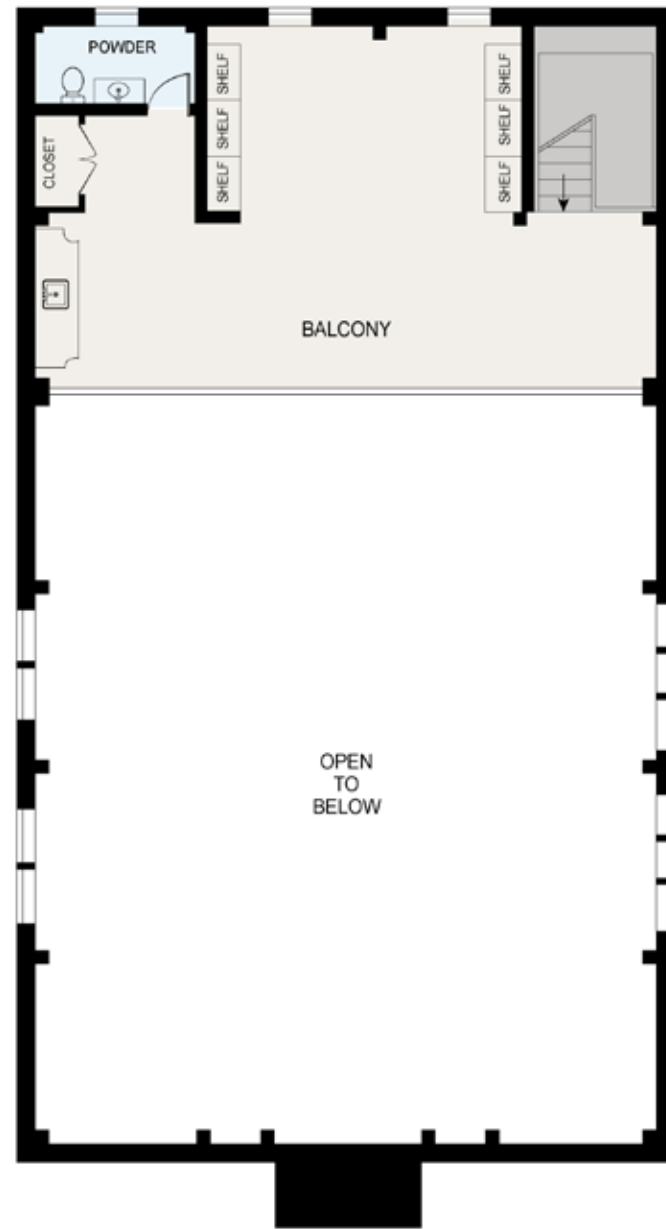


**BARN HOUSE  
FIRST LEVEL**

- Opulent Living Room with Double Height Ceilings and Fireplace
- Kitchen with La Cornue Range and Hood
- Powder Room
- Custom Dining Room Conservatory Imported from York, England by Oak Leaf Conservatories



- UTILITY
- LIVING
- BEDROOM
- BATH
- DECK/TERRACE
- FIREPLACE



**BARN HOUSE  
SECOND LEVEL**

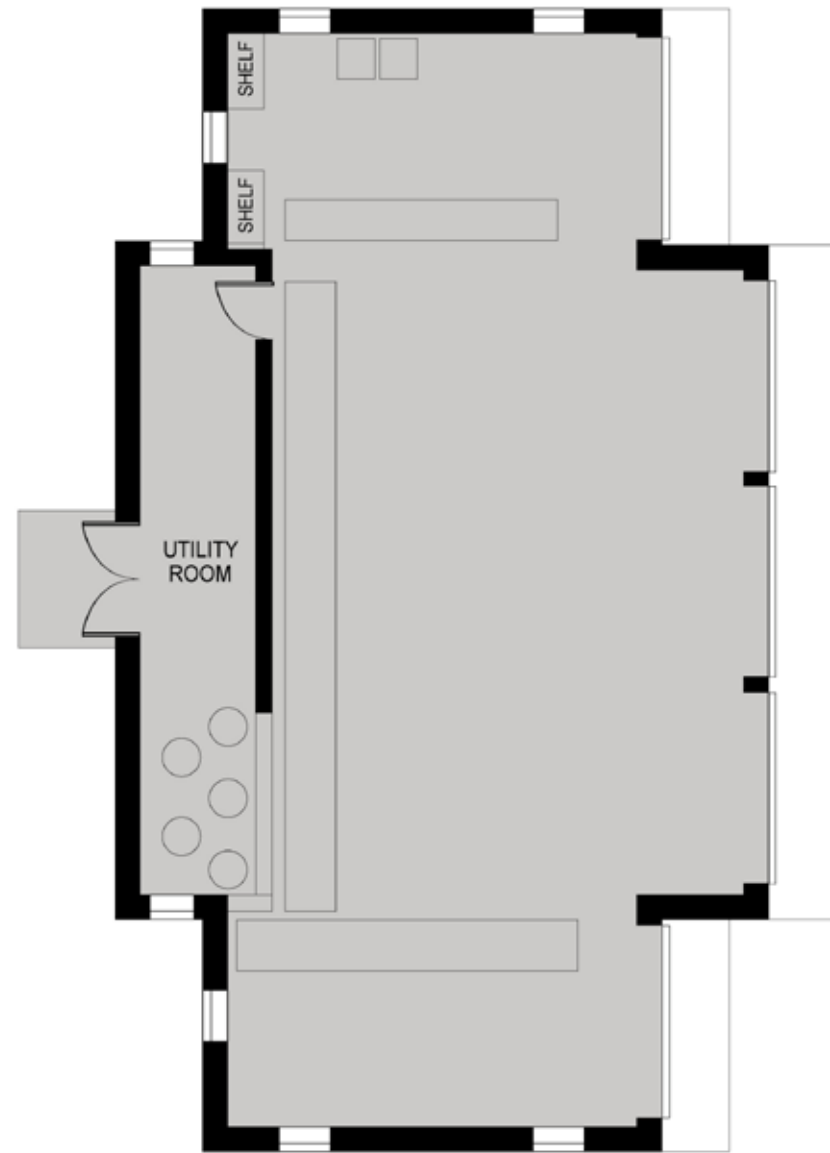
- Loft with Sitting Room
- Powder Room

	UTILITY
	LIVING
	BEDROOM
	BATH
	DECK/TERRACE
	FIREPLACE

**BARN HOUSE  
LOWER LEVEL**




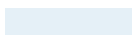
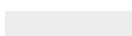

- Large Gym
- Theatre with Richard Gray AV Sound system
- Two Spa Rooms
- Full Bathroom with Steam Shower
- Game Room with Billiards Table and Ping Pong
- Wine Room
- Kitchenette
- Laundry Room

	UTILITY
	LIVING
	BEDROOM
	BATH
	DECK/TERRACE
	FIREPLACE



**GARAGE**




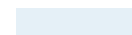
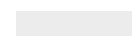

- Five Car Garage
- Utility Room
- Storage

	UTILITY
	LIVING
	BEDROOM
	BATH
	DECK/TERRACE
	FIREPLACE



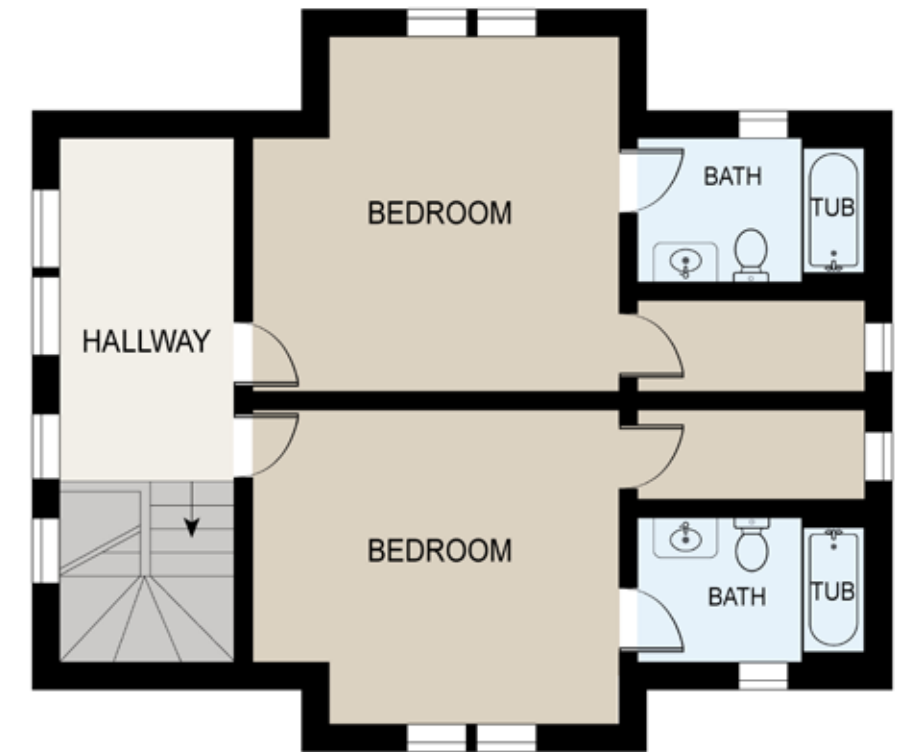
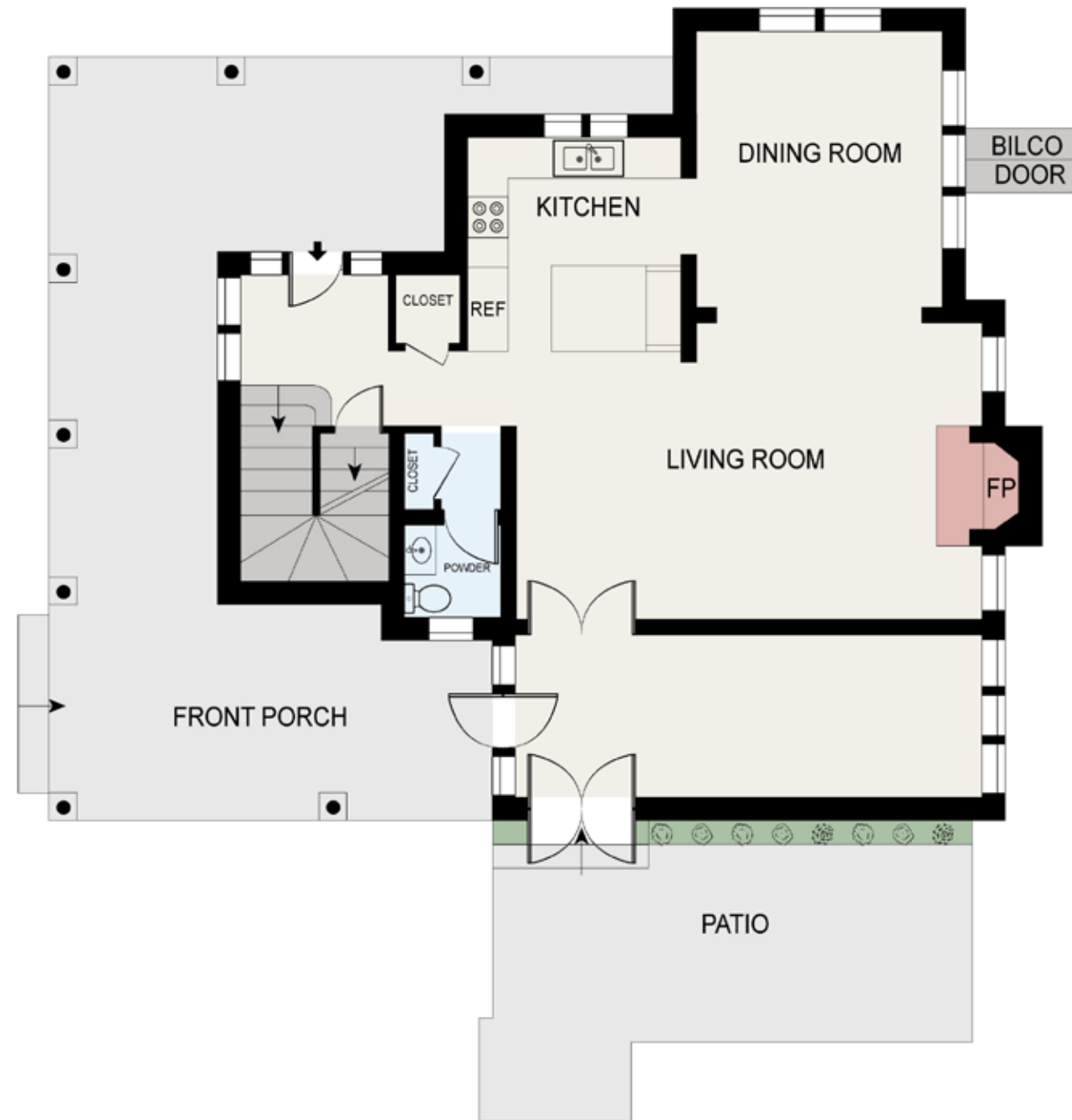
**ONE STORY GUEST COTTAGE**

- Built in 2007
- 938 SF+/-
- Living Room with Fireplace
- Kitchen
- Dining Room
- 2 Bedrooms
- 2 Full Bathrooms
- Covered Porch
- Painted Red Oak Plank Floors

	UTILITY
	LIVING
	BEDROOM
	BATH
	DECK/TERRACE
	FIREPLACE

## 2 STORY GUEST COTTAGE

- Built in 2007
- 2,589 SF+/-
- Living Room with Fireplace
- Kitchen
- Dining Room
- 2 Bedrooms
- 2.5 Bathrooms
- Covered Porch
- Painted Red Oak Plank Floors



- UTILITY
- LIVING
- BEDROOM
- BATH
- DECK/TERRACE
- FIREPLACE
- GRASS