

First Level

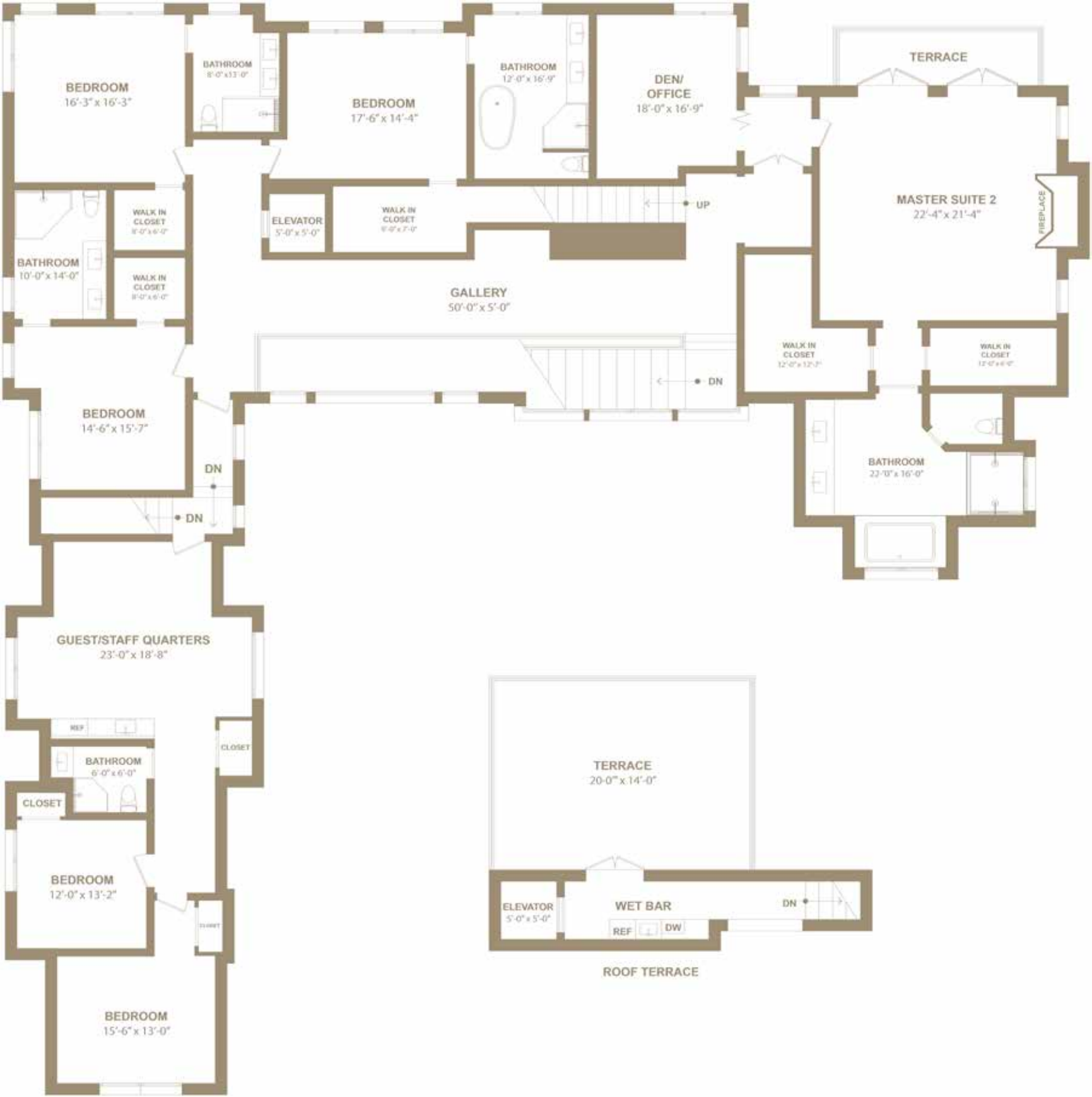
- Entry Foyer with Elevator and Powder Room
- Great Room with Coffered Ceilings, Wood-burning Fireplace, French Doors and Invisible Built-in Speakers
- Dining Room with Oversized Glass Windows and Invisible Built-in Speakers
- Chef’s Commercial Grade Kitchen Featuring:
 - Honed 2” Calacatta Michelangelo Marble Slab Countertops and Full-height Slab Backsplash
 - Custom Millwork
 - Maple Cabinetry with Self-closing Drawer Mechanism
 - Dornbracht Fixtures
 - Two 36” Sub-Zero Refrigerators and Freezers
 - 60” Wolf Dual Fuel Range with Six Burners, Grill and Griddle
 - Two 30” Wolf Ovens Below Range and One Additional 30” Wall-mounted Wolf Oven
 - Wolf Hood with Integrated Heating Lamps
 - Wolf Wall-mounted Warming Drawer
 - Wolf Wall-mounted Microwave
 - Two Miele Dishwashers
 - 24” Sub-Zero Dual Temperature Under-counter Wine Cooler
 - 15” Sub-Zero Under-counter Icemaker
 - Secondary Sink
 - Retractable Potfiller
 - Pantry
- Living Room with:
 - 20’ Ceiling Authentic Douglas Fir Timber-framed Roof Trusses with Western Red Cedar Planking
 - Full Surround Sound System Including In-wall Subwoofer and Custom Surround Sound Bar
 - Two In-ceiling J-boxes for Decorative Light Fixtures
 - Wood-burning Fireplace
- JR. Master Suite with:
 - Fireplace
 - Walk-in Closet with Custom Sapele Millwork
 - Spa-like Bathroom with Book Matched Slabs of Italian Travertine, Venetian Plaster Walls, and 72” Kallista Soaking Tub
- Bedroom with Full Bathroom and Walk-in Closet
- Mudroom with Access to 2 Car Garage



All information is from sources deemed reliable but is subject to errors, omissions, changes in price, prior sale or withdrawal without notice. All rights to content, photographs and graphics reserved to broker. Equal Housing Opportunity Broker. Architectural renderings may be shown. Photographs may be enhanced. Real estate agents affiliated with Bespoke Real Estate are independent contractor sales associates and are not employees of Bespoke Real Estate. Bespoke Real Estate LLC is a licensed Real Estate Broker. 903 Montauk Highway, Water Mill NY 11976

SECOND LEVEL

- Gallery Landing
- Master Wing with:
 - Double Entrance Doors
 - Office
 - Two Walk-in Closets, Each with Custom Cerused White Oak Millwork
 - Southern Facing Terrace
 - Custom Venetian Plaster Walls
 - Integrated Custom Millwork Dual Vanities
 - Fireplace with Sitting Area
- Master Bathroom featuring:
 - Floors and Shower Made from Italian Travertine Marble Slabs
 - Daku Custom Sconces
 - Separate Water Closet with Toto Neorest 500 Toilet with Remote Cleansing and Automatic Lids
 - 72” Bain Origami Oval Airjet Tub
 - Dornbracht Polished Chrome Fixtures including Rain Showers, Body Sprays and Handhelds
 - Daku Custom Sconces
- Access to Roof Terrace with Wet Bar/Kitchenette
- Bedroom Suite with Walk-in Closet and Bathroom with Free Standing Tub, Dual Sinks, Shower, and Water Closet
- Two Guest Suites with Walk-in Closets and Bathrooms with Dual Sinks and Showers
- Guest/Staff Quarters with:
 - Living Room
 - Kitchenette
 - Two Bedrooms
 - Full Bathroom



All information is from sources deemed reliable but is subject to errors, omissions, changes in price, prior sale or withdrawal without notice. All rights to content, photographs and graphics reserved to broker. Equal Housing Opportunity Broker. Architectural renderings may be shown. Photographs may be enhanced. Real estate agents affiliated with Bespoke Real Estate are independent contractor sales associates and are not employees of Bespoke Real Estate. Bespoke Real Estate LLC is a licensed Real Estate Broker. 903 Montauk Highway, Water Mill NY 11976

LOWER LEVEL

- 3,800 SF+/-
- Wood Paneled Open Staircase
- 2,800+ Bottle Mahogany Storage, Imported Antique Terra Cotta Floor, Dedicated HVAC System with Temperature Monitoring System
- State-of-the-Art Movie Theatre
- Personal Gym with Mirrored Wall and In-ceiling Speakers and Rubber Floor System
- Steam Room, Adjacent Shower and Dressing Room
- Recreation Room with In-ceiling Speakers and Gas Fireplace
- Powder Room
- Laundry Room
- Storage Space

