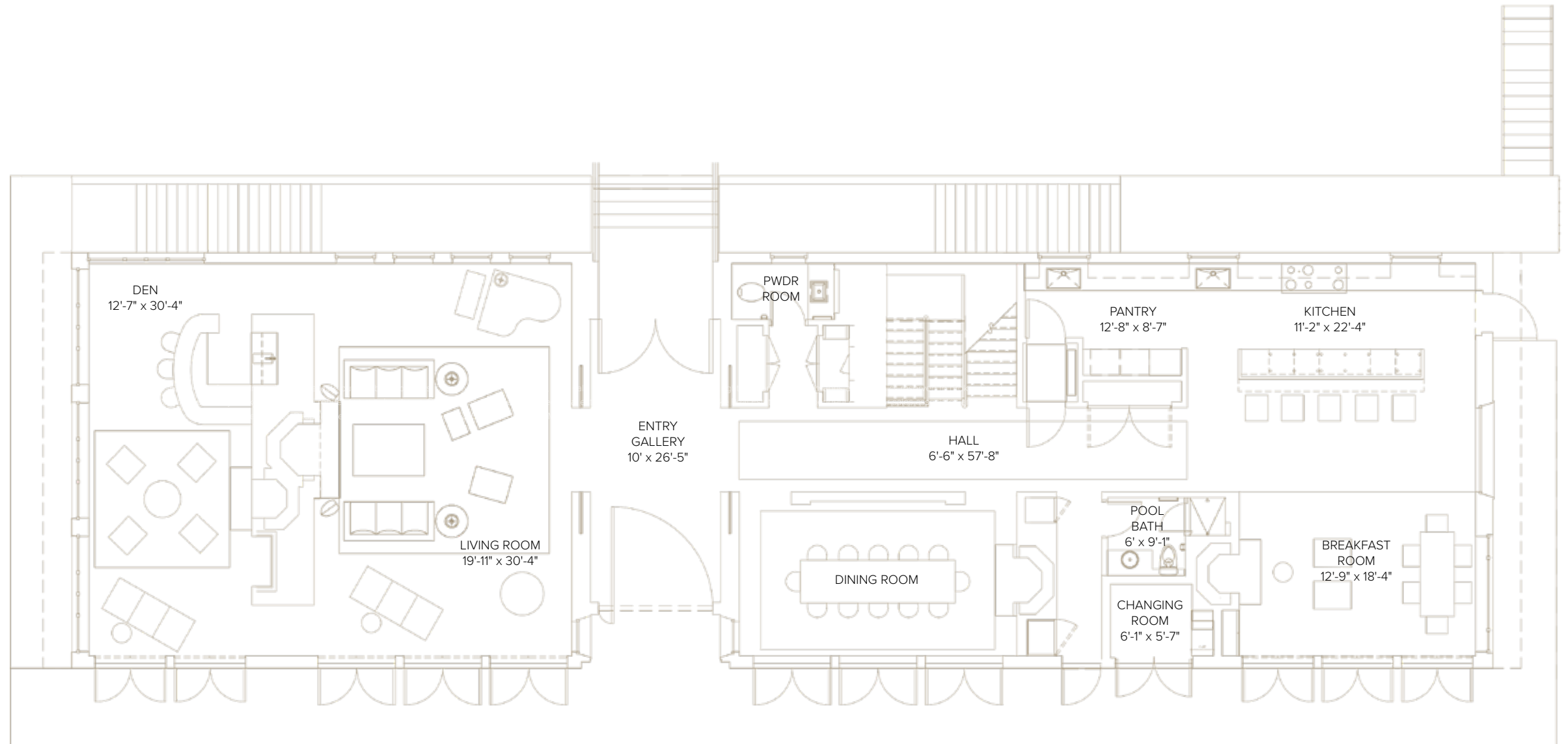


MAIN RESIDENCE

First Level Floorplan

- 3,110 SF+/-
- Entry Gallery
- Living Room with Custom CorTen Steel Double Sided Fireplace, Retractable Wall with TV, and Wall of French Doors
- Den with Wet Bar, Dishwasher, Refrigerator, Bar Seating, a Seating Area with Fireplace, and Doors to Shade Pavilion
- Formal Dining Room with Fireplace and Wall of French Doors
- Powder Room
- Full Pool Bathroom with Changing Room
- Breakfast Room with Seating Area, Fireplace, and Access to Shade Pavilion
- Custom Valcucine Kitchen with Pantry, Island Seating, Dual Refrigerators, Freezers, and Dishwashers
- Elevator

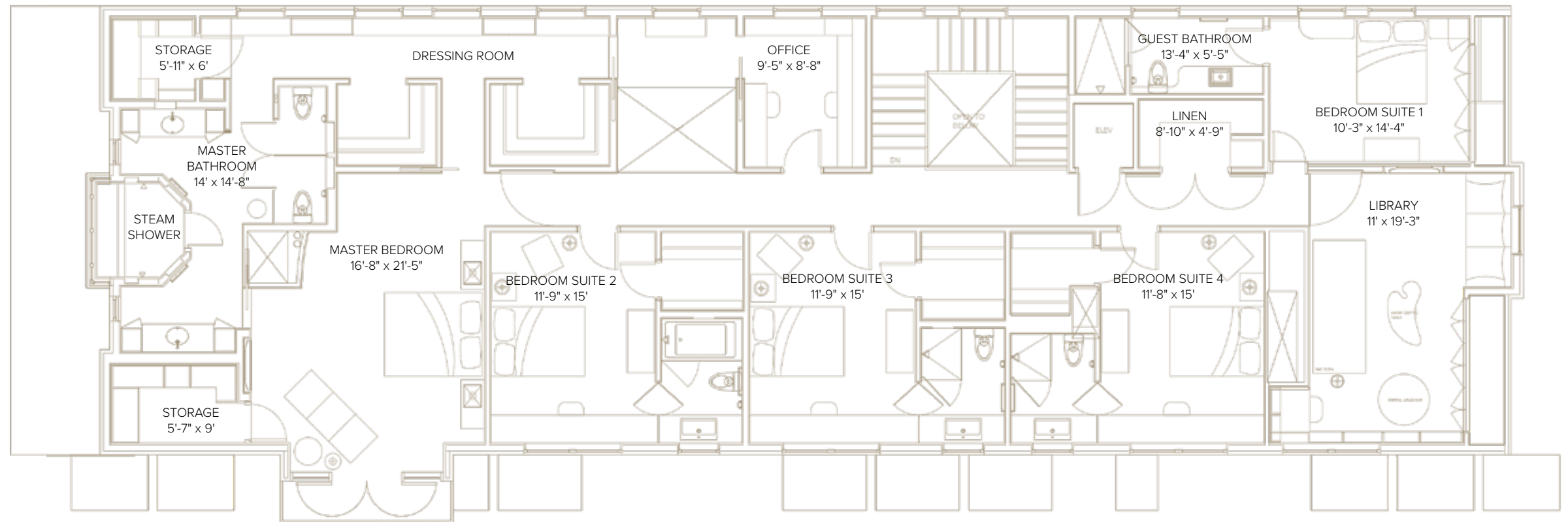


All information is from sources deemed reliable but is subject to errors, omissions, changes in price, prior sale or withdrawal without notice. All rights to content, photographs and graphics reserved to broker. Equal Housing Opportunity Broker. Architectural renderings may be shown. Photographs may be enhanced. Real estate agents affiliated with Bespoke Real Estate are independent contractor sales associates and are not employees of Bespoke Real Estate. Bespoke Real Estate LLC is a licensed Real Estate Broker. 903 Montauk Highway, Water Mill NY 11976

MAIN RESIDENCE

Second Level Floorplan

- 2,275 SF+/-
- Master Bedroom with:
 - Private Balcony Overlooking Ocean
 - Automated Solar Black Out Shades
 - 2 Walk-In Closets
 - Bathroom with 2 Water Closets, Opulent Shower/Steam Room, 2 Vanities, Radiant Heated Floors, and Heated Towel Bar
 - 2 Storage Closets
- Three Bedroom Suites with Full Bathrooms and Walk-In Closets
- Bedroom Suite with Full Bathroom
- Library with Built-in Shelves, Custom Cabinetry, Storage, and Vaulted Ceilings
- Office
- Laundry
- Elevator

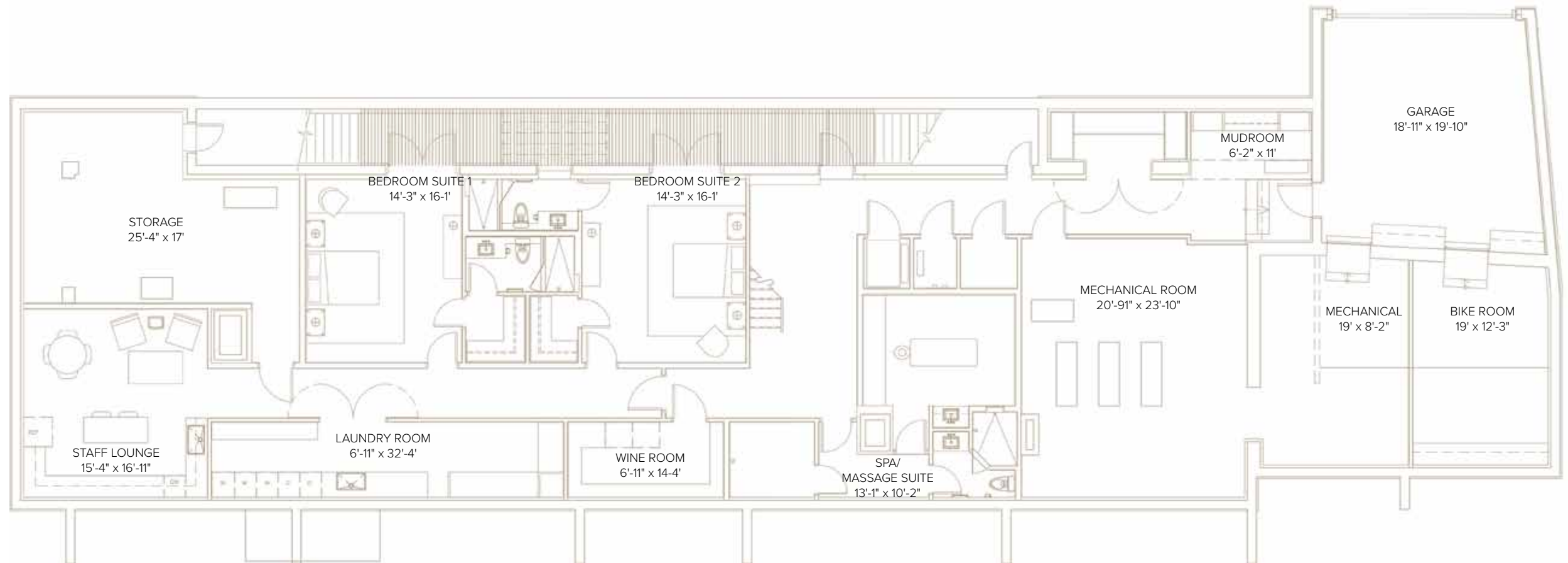


All information is from sources deemed reliable but is subject to errors, omissions, changes in price, prior sale or withdrawal without notice. All rights to content, photographs and graphics reserved to broker. Equal Housing Opportunity Broker. Architectural renderings may be shown. Photographs may be enhanced. Real estate agents affiliated with Bespoke Real Estate are independent contractor sales associates and are not employees of Bespoke Real Estate. Bespoke Real Estate LLC is a licensed Real Estate Broker. 903 Montauk Highway, Water Mill NY 11976

MAIN RESIDENCE

Lower Level Floorplan

- 3,510 SF+/-
- 2 Bedroom Suites with Full Bathrooms and Walk-In Closets
- Wine Room with Temperature Control
- Spa/Massage Suite
- Mudroom off of Garage
- Staff Lounge
- Expansive Laundry Room
- Bike Room
- Storage Room
- Mechanical Rooms

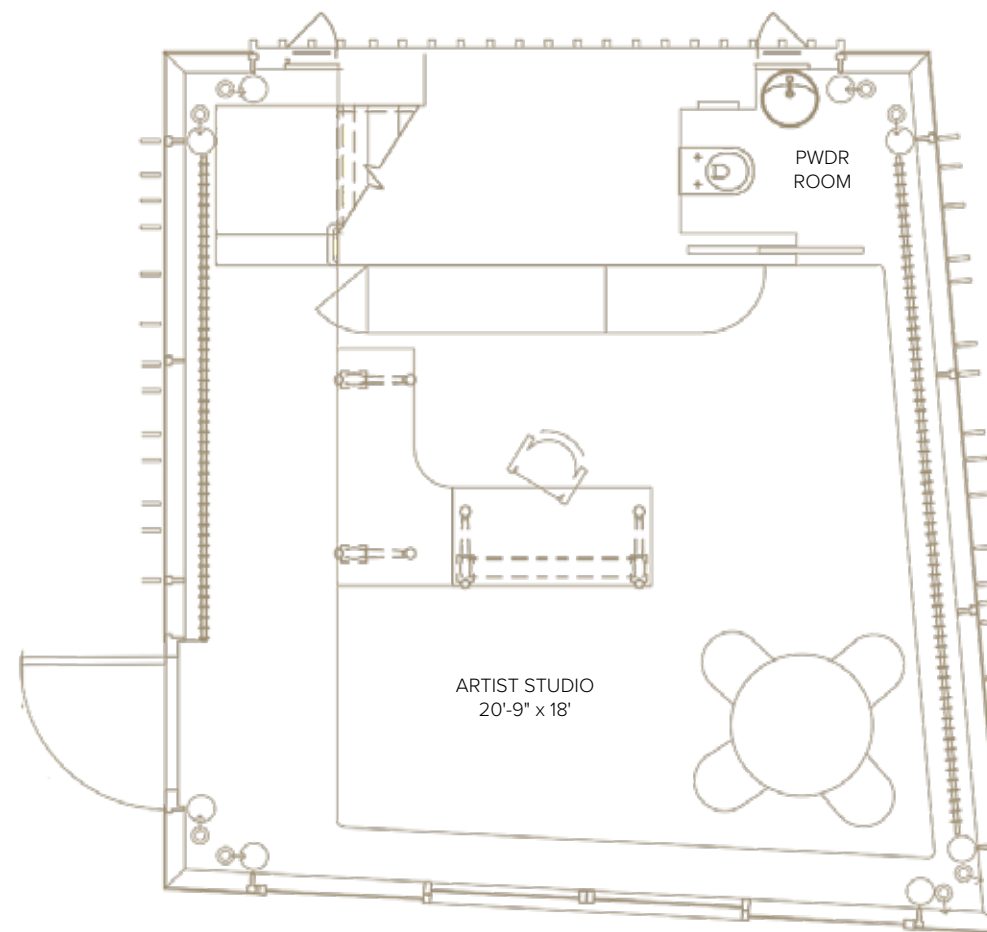


All information is from sources deemed reliable but is subject to errors, omissions, changes in price, prior sale or withdrawal without notice. All rights to content, photographs and graphics reserved to broker. Equal Housing Opportunity Broker. Architectural renderings may be shown. Photographs may be enhanced. Real estate agents affiliated with Bespoke Real Estate are independent contractor sales associates and are not employees of Bespoke Real Estate. Bespoke Real Estate LLC is a licensed Real Estate Broker. 903 Montauk Highway, Water Mill NY 11976

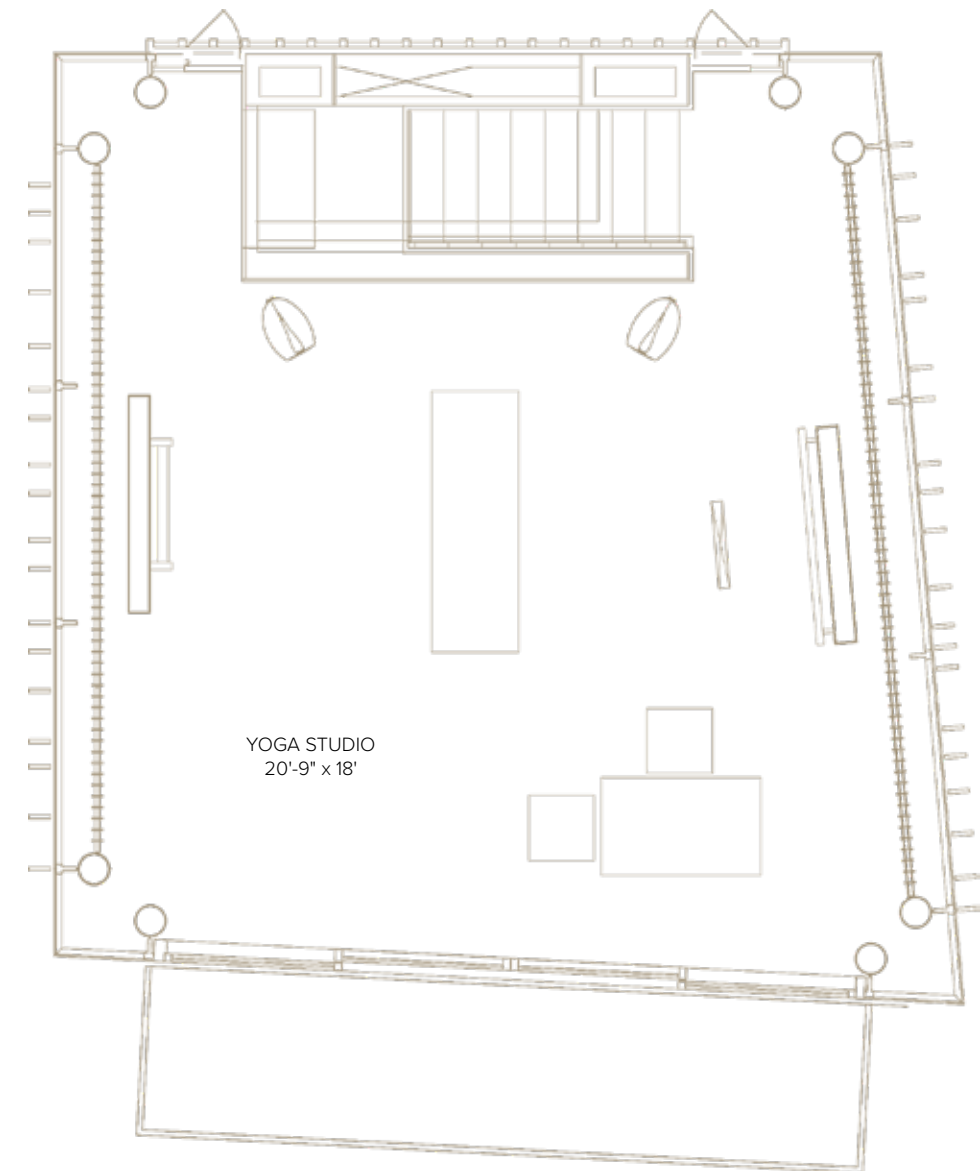
Yoga/Artist Studio Floorplan

- 680 SF+/-
- Artist Studio with Powder Room and Sliding Glass Doors Overlooking Pool and Ocean
- Yoga Studio with Sliding Glass Doors to Balcony Overlooking Ocean
- Wood Flooring Throughout
- Custom Glass Curtain Wall

First Level



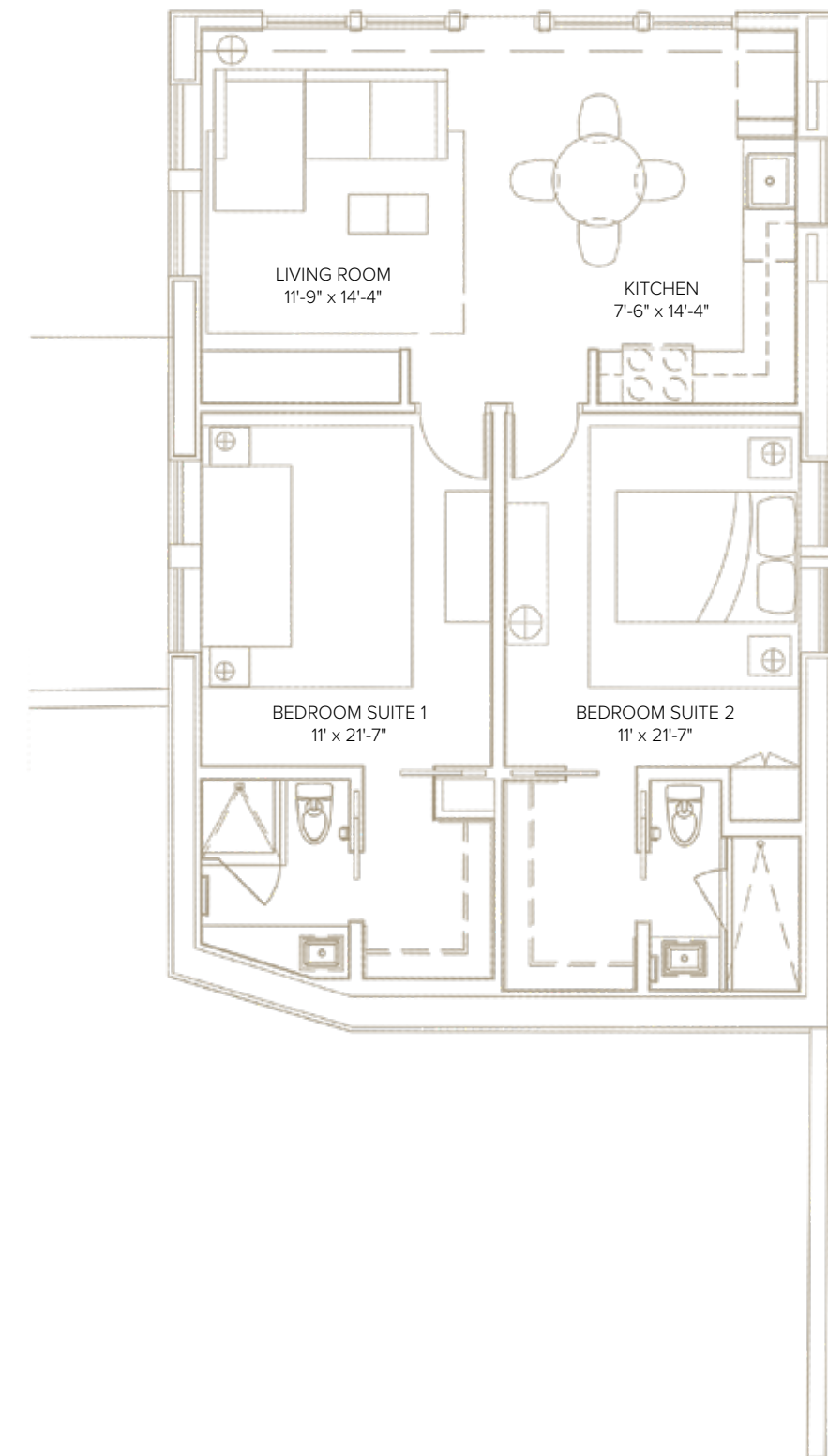
Second Level



All information is from sources deemed reliable but is subject to errors, omissions, changes in price, prior sale or withdrawal without notice. All rights to content, photographs and graphics reserved to broker. Equal Housing Opportunity Broker. Architectural renderings may be shown. Photographs may be enhanced. Real estate agents affiliated with Bespoke Real Estate are independent contractor sales associates and are not employees of Bespoke Real Estate. Bespoke Real Estate LLC is a licensed Real Estate Broker. 903 Montauk Highway, Water Mill NY 11976

Caretakers/Guest Cottage Floorplan

- 850 SF+/-
- Legally/Fully Permitted
- Full Kitchen
- Dining Area
- Living Room
- 2 Bedroom Suites with Full Bathrooms and Walk-in Closets
- Wood Flooring Throughout
- 2-Car Garage
- Green Roof



All information is from sources deemed reliable but is subject to errors, omissions, changes in price, prior sale or withdrawal without notice. All rights to content, photographs and graphics reserved to broker. Equal Housing Opportunity Broker. Architectural renderings may be shown. Photographs may be enhanced. Real estate agents affiliated with Bespoke Real Estate are independent contractor sales associates and are not employees of Bespoke Real Estate. Bespoke Real Estate LLC is a licensed Real Estate Broker. 903 Montauk Highway, Water Mill NY 11976