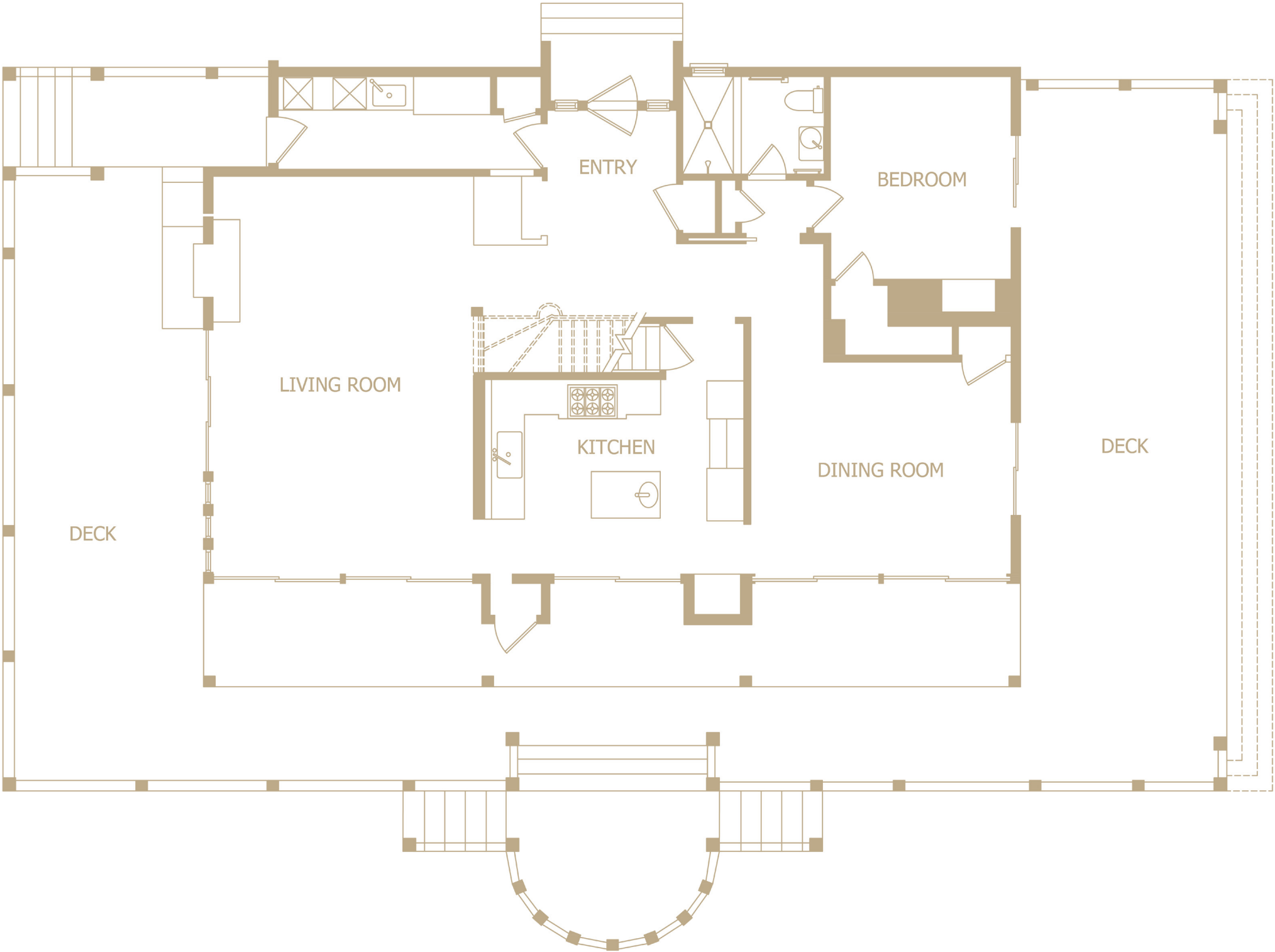


FLOORPLANS

168 Jobs Lane, Bridgehampton, NY

FIRST LEVEL

- Double Height Entry Foyer
- Mudroom/Laundry Room
- Light Filled Living Room with:
 - Eco-Smart Gas Fireplace
 - Double Height
 - Sliding Glass Doors to Outdoor Living and Dining Areas
- Eat-in Kitchen with:
 - Bar Seating for Three
 - High-end Appliances Including Miele Dishwasher, Viking 4-Burner Range Top, Viking Refrigerator, Two Viking Wall Ovens
 - Sliding Glass Doors to Outdoor Living and Dining Areas
- Dining Room with Sliding Glass Doors to Poolside Outdoor Living and Dining Areas
- Full Bathroom
- 1 Guest Bedroom



B

FLOORPLANS

168 Jobs Lane, Bridgehampton, NY

SECOND LEVEL

- Primary Suite with:
 - Window Seat
 - Two Walk-in Closet
 - Full En-suite Bathroom with Glass Enclosed Shower
- 2 Guest Bedrooms
- 1 Full Bathroom

