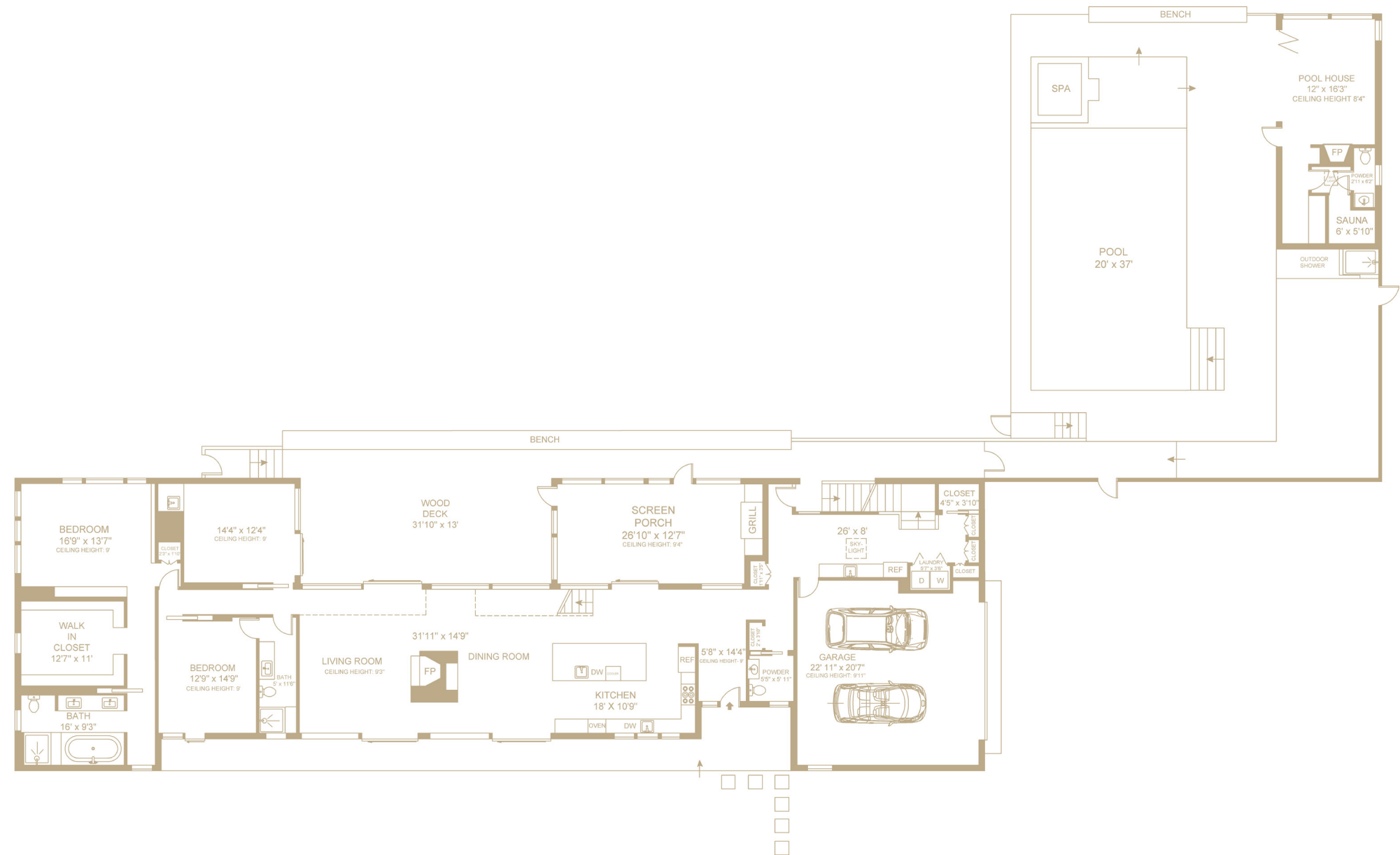


FLOORPLANS

15 SEAPONACK DRIVE, SAG HARBOR, NY

FIRST LEVEL

- 3,000 SF+/-
- Great Room with Soaring Double-height Ceilings, Custom Architectural Lighting and Fabricated Industrial Steel Woodburning Fireplace
- Chef's Kitchen Perfect for Entertaining
 - Dual Sinks & Dishwashers
 - Top-of-the-line Appliances
 - Opulent Center Island
- Formal Dining Room
- Screened-in Living Area with Outdoor Kitchen
- Powder Room
- Master Bedroom
- Walk-in Closet
- En-suite Five Fixture Bathroom with Pocket Doors for Privacy
- Guest Bedroom/TV room with full Wet Bar and Direct Access to Outdoor Areas
- Guest Bedroom with En-Suite Bathroom
- Prep Wing
 - Prep area with Super White Honed Quartzite Stone Countertops
 - Oversized Sink
- Full Size Side-by-side Sub Zero Refrigerator/Freezer Combo
- Access to Pool & Rooftop Deck

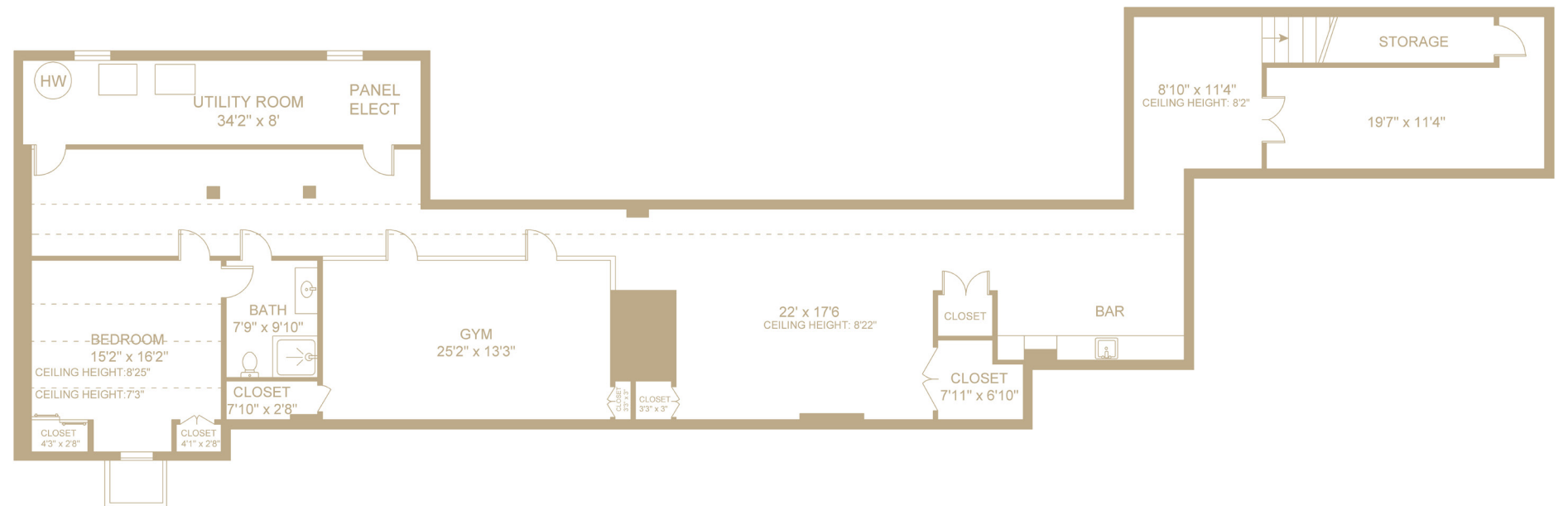


FLOORPLANS

15 SEAPONACK DRIVE, SAG HARBOR, NY

LOWER LEVEL

- 3,000 SF +/-
- Glass Enclosed Office/Bonus Room
- Media/Entertainment Room
- Fully Equipped Glass Enclosed Gym
- Wet Bar with Leather Granite Countertops
- Wine Storage
- Guest Bedroom
 - Custom Seura Mirror Television
 - Egress Window
 - En-Suite Spa-like Bathroom



FLOORPLANS

15 SEAPONACK DRIVE, SAG HARBOR, NY

ROOFTOP VIEWING DECK

- Bay, Creek & Reserve Views
- Fully Turfed
- PE Built-in Seating

