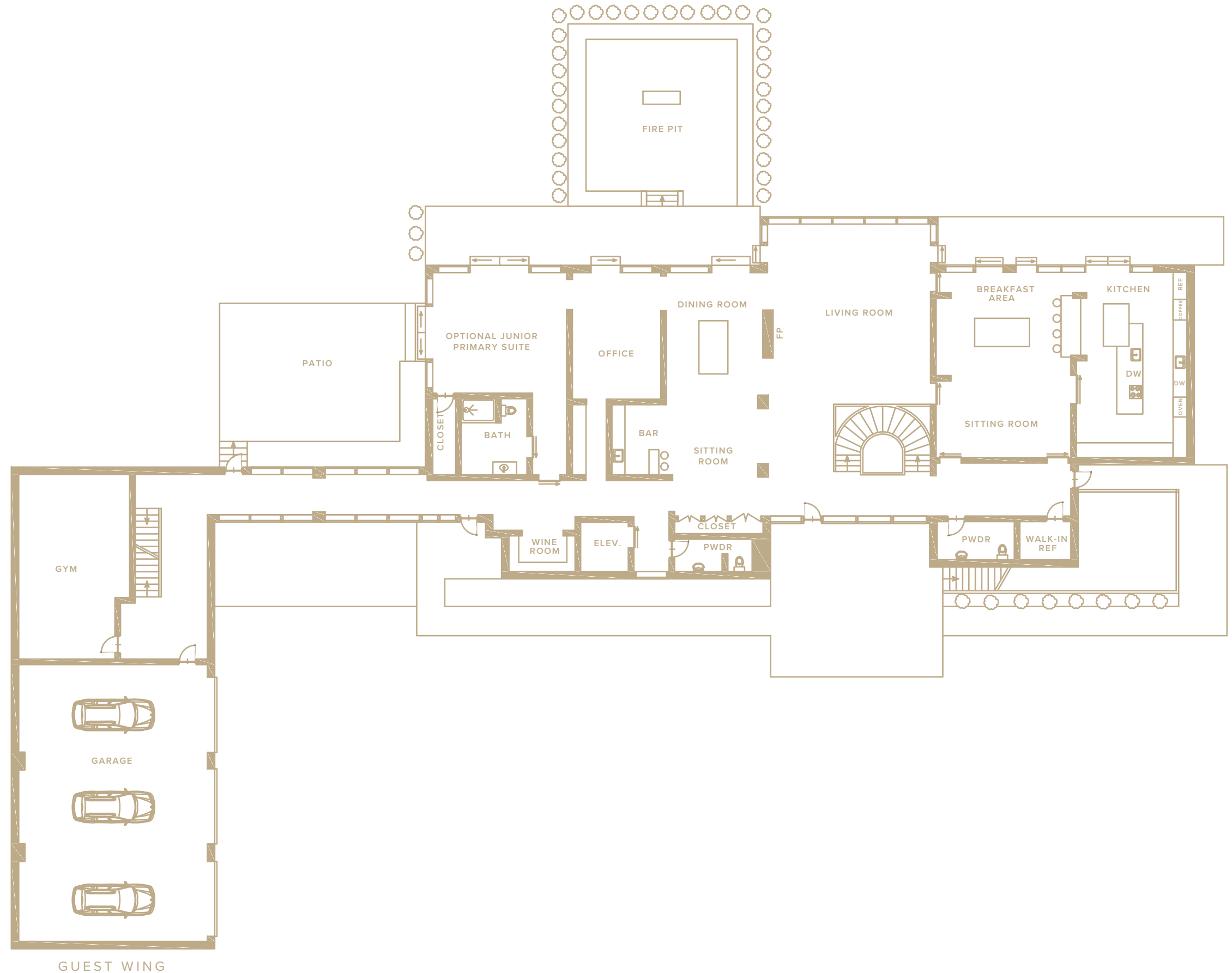


MAIN RESIDENCE

FIRST LEVEL | 4,800 SF +/-

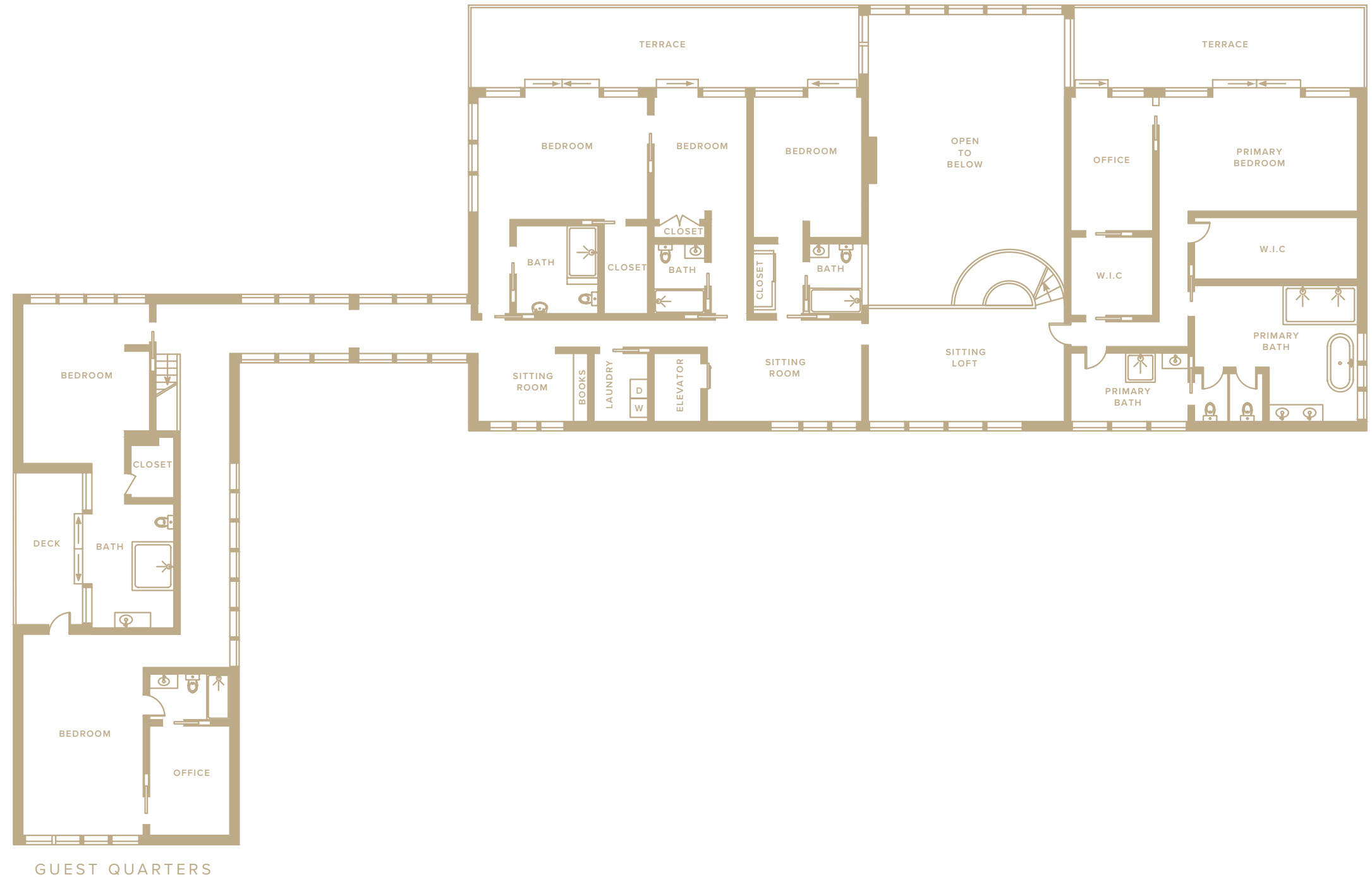
- Entry Foyer
- Double-Height Living Room
- Chef's Kitchen:
 - Stainless Steel Boffi Cabinets
 - High-End Appliances
 - Breakfast Area
 - Sitting Area
 - Walk-in Refrigerator
- Dining Room:
 - State-of-the-art Bar
 - Sitting Room
- Office
- Optional Junior Primary En-Suite Bedroom
- Enclosed Temperature Controlled Wine Room
- 2 Powder Rooms
- Gym
- Access to Attached 3-Car Garage



MAIN RESIDENCE

SECOND LEVEL | 5,800 SF +/-

- Sitting Loft
- Primary En-Suite Bedroom:
 - 2 Full Bathrooms (One with Polished Glass Tile Floors, Custom Marble Slab Shower Walls)
 - Two Walk-in Closets
 - Private Office/Sitting Room
 - Access to Private Terrace
- 3 En-Suite Bedrooms with Access to Shared Terrace
- 2 Sitting Rooms
- Laundry Room
- Private Guest Quarters:
 - 2 En-Suite Bedrooms (1 with Office), Each with Access to Shared Eastern-Facing Terrace



MAIN RESIDENCE

LOWER LEVEL: 4800 SF +/-

- Recreation Room with Pool Table & Access to an Outdoor Dining Area
- Office with Full Bathroom
- 10-Seat Movie Theatre
- Full Bathroom
- Glam Room
- Salt Room for Halotherapy
- Powder Room
- Playroom with Full Bathroom
- Laundry Room
- Private Guest Quarters:
 - Kitchenette
 - 2 En-Suite Bedrooms
 - Secondary Staircase to the Main Level Gym



GUEST HOUSE

1,800 SF +/-

FIRST LEVEL

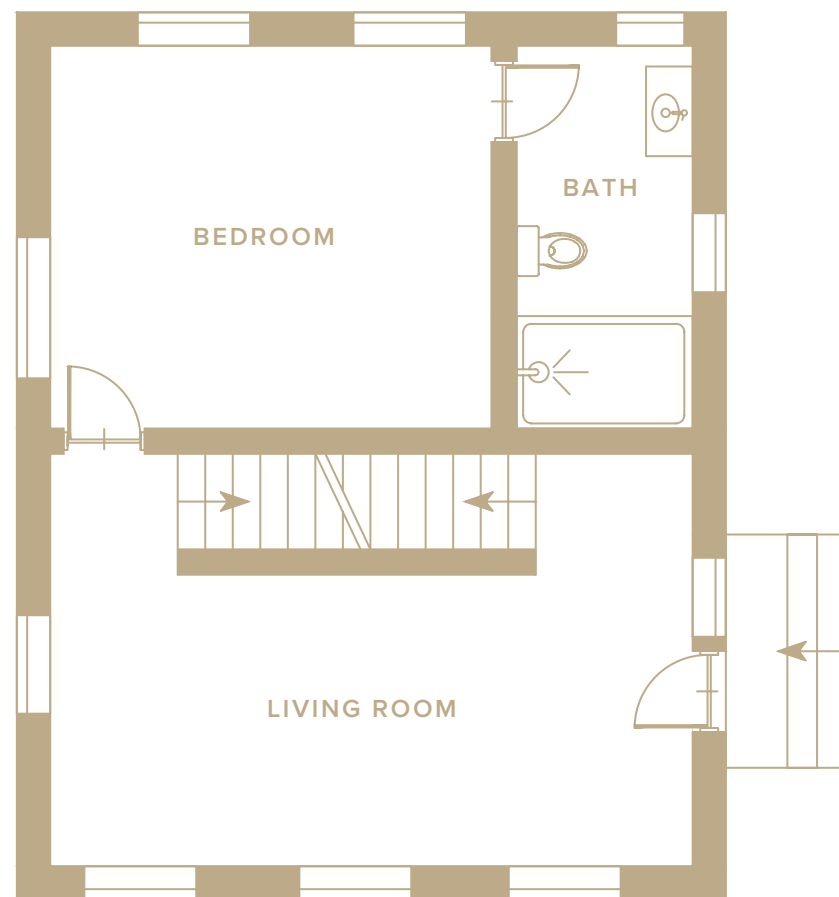
- Living Area
- Legal En-Suite Bedroom

SECOND LEVEL

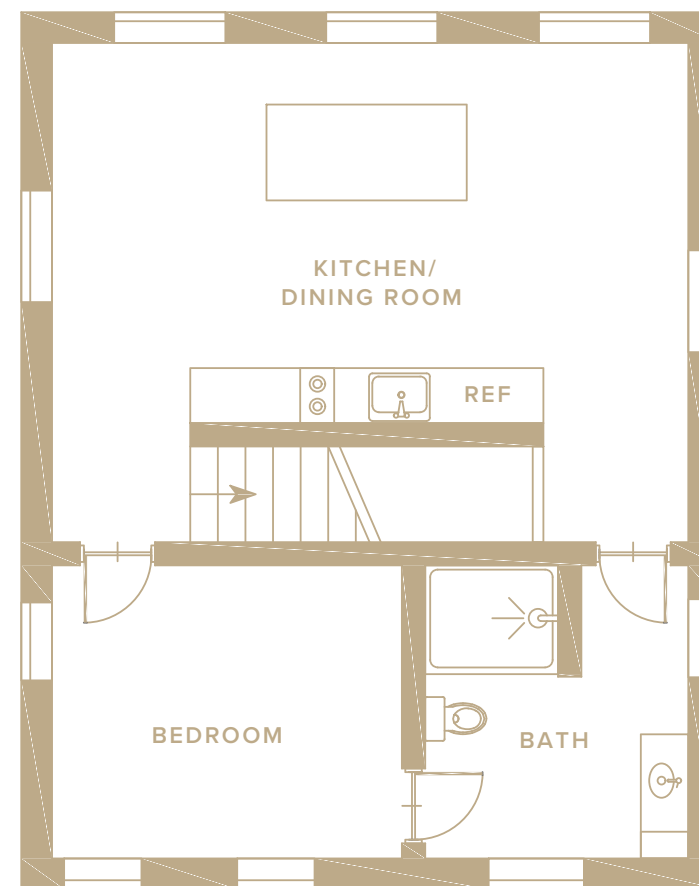
- Kitchen & Dining Area
- Legal En-Suite Bedroom

LOWER LEVEL

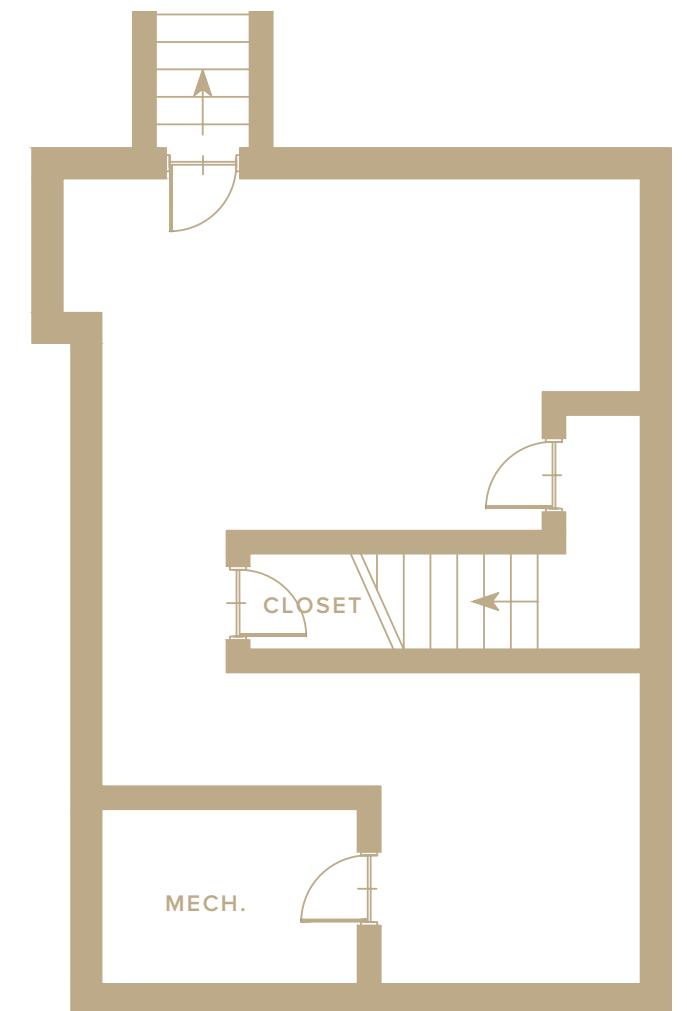
- Storage & Mechanicals



FIRST LEVEL



SECOND LEVEL



LOWER LEVEL

802 TOWN LINE ROAD, SAGAPONACK, NY

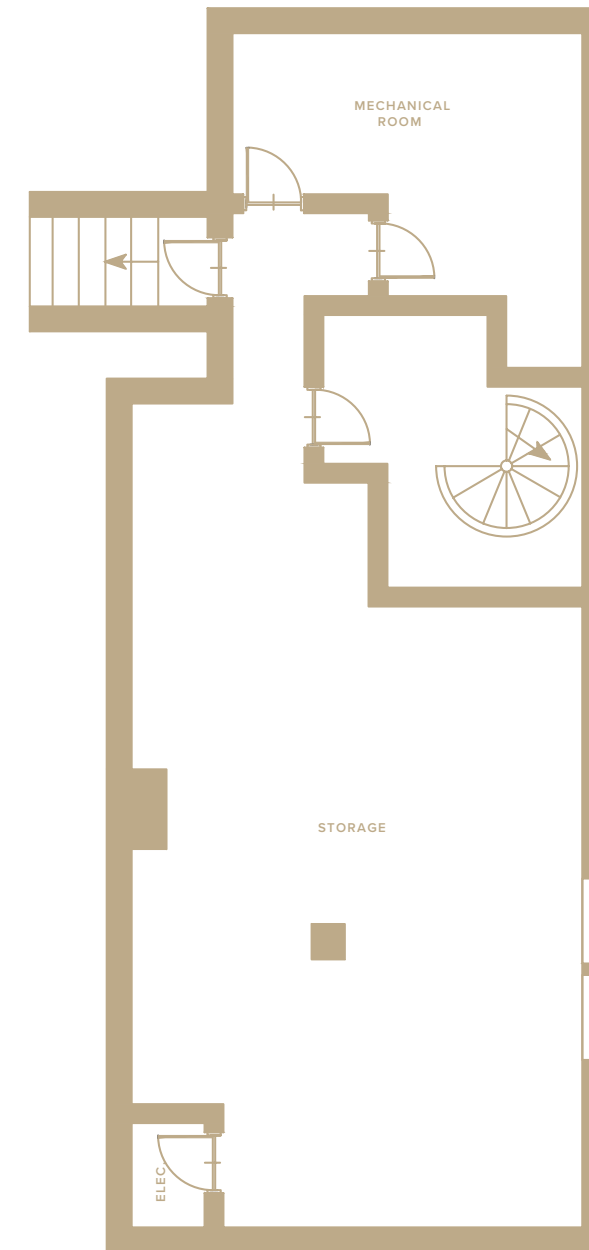
SCHOOL HOUSE

1,800 SF +/-

- Built in 1884 & Completely Restored
- Originally Designed by New York Architect Henry M. Congdon and Operating until 1930
- Living Room
- Kitchen
- Full Bathroom
- Lower Level Storage



FIRST LEVEL



LOWER LEVEL