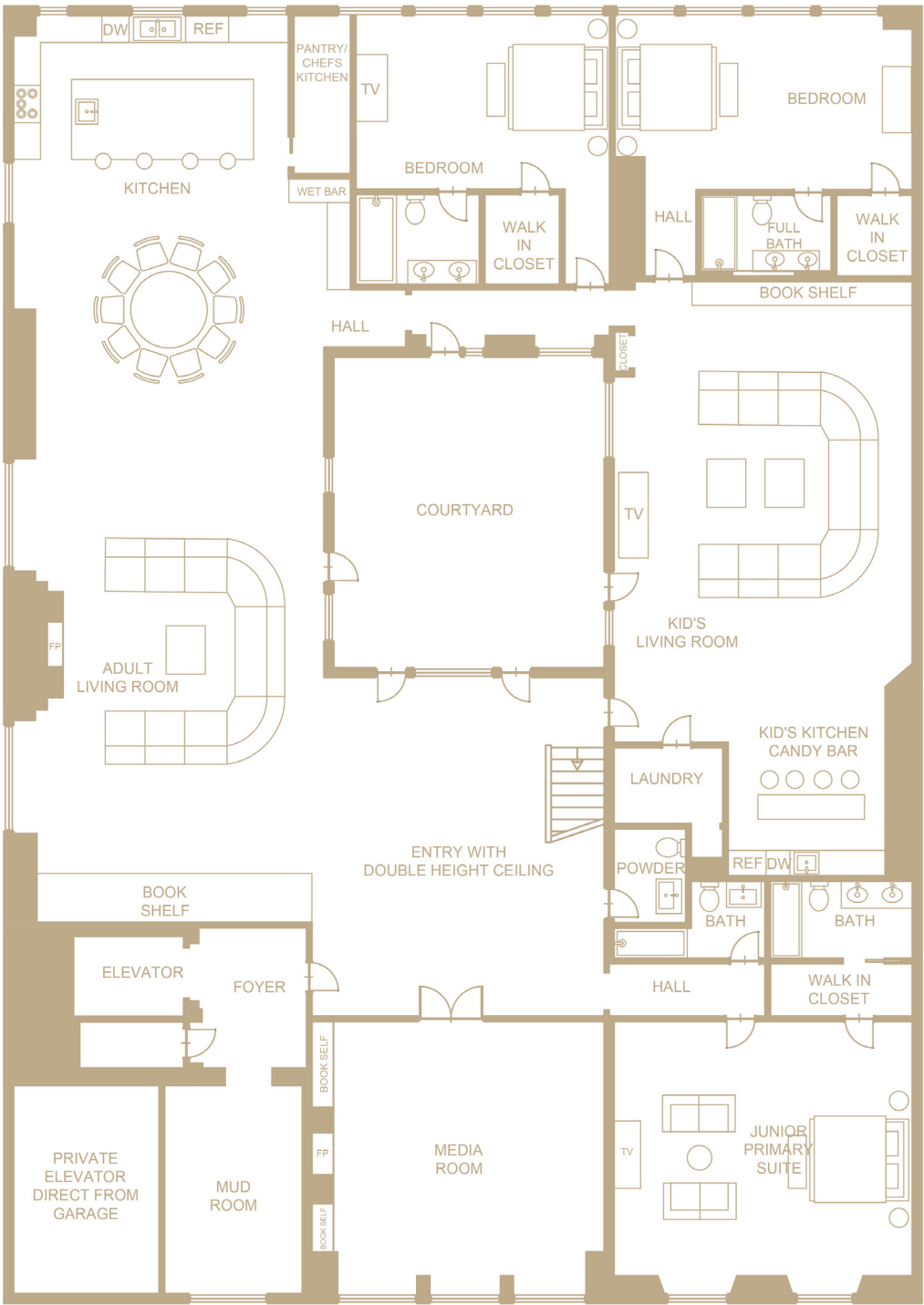


165 PERRY STREET, #PH, WEST VILLAGE, NY

FIRST LEVEL

- 5,285 SF+/-
- Elevator Service Area
- Mudroom
- Double-Height Entry Foyer
  - Central Courtyard Access
- Adult Living Room with Fireplace
- Eat-In Chef’s Kitchen
  - Pantry/Prep Kitchen
  - High-End Appliances
- Dining Area with Wet Bar
- Media Room/Flex Space with Fireplace
- 2 En-Suite Guest Bedrooms
  - Walk-In Closets
- Children’s Living Room
  - Kitchen/Candy Bar
- Laundry
- Powder Room
- Full Bathroom
- Junior Primary En-Suite
  - Walk-In Closet



\*Floor plans are conceptual and plans have not been applied for and/or approved.

SECOND LEVEL

- 2,257 SF+/-
- Primary Bedroom
  - Dual Walk-In Closets
  - Fireplace
- Primary Bathroom
  - Dual Vanity
  - Free-Standing Soaking Tub
  - Oversized Shower
  - Water Closet
- 1 En-Suite Guest Bedroom/Office
- Access to Rooftop Terrace
- Electrical & Mechanical Rooms

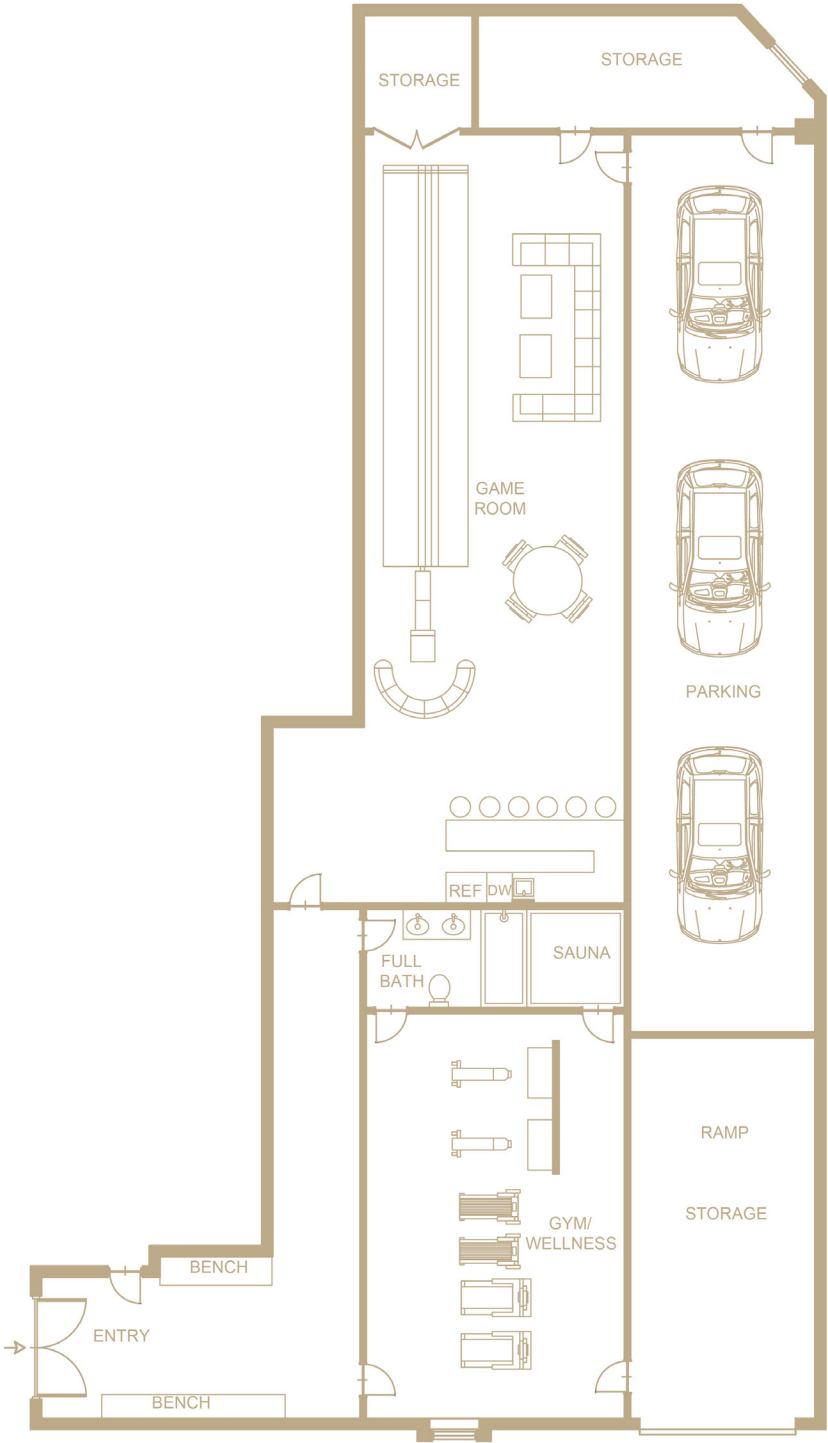


\*Floor plans are conceptual and plans have not been applied for and/or approved.

165 PERRY STREET, #PH, WEST VILLAGE, NY

LOWER LEVEL

- 3,883 SF+/-
- Glass-Walled 3-Car Garage
- Game Room
  - Bowling Alley
  - Kitchen & Bar
  - Lounge Areas
- Gym/Wellness Room
  - Sauna
  - Full Bathroom
- Storage Space



\*Floor plans are conceptual and plans have not been applied for and/or approved.