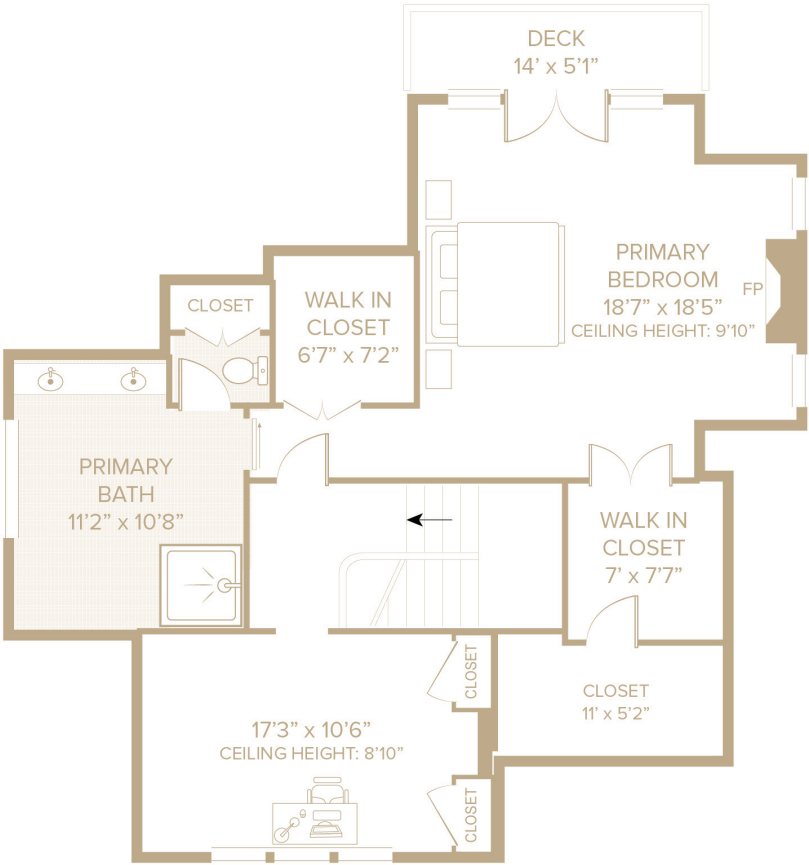


-
- This floor plan illustrates a single-story residence with a total area of 2,250 sq. ft. The layout includes a large sitting area (25'2" x 13'1") with a fireplace, a kitchen (17' x 13'9") with a refrigerator and sink, a dining room (29' x 18', ceiling height 9'4"), and a living room (14'5" x 15'5") with a fireplace and bookshelves. The kitchen is adjacent to a deck and a BBQ area. The living room is connected to a media room (14'5" x 15'5") and a foyer (14'7" x 12'6"). The bedroom (12'8" x 9'11") features a closet, and the bathroom (6' x 7') includes a toilet and sink. A pantry is located near the kitchen, and a closet is situated near the bedroom. The plan also shows a deck, a BBQ area, and a fireplace in the living room.
- Rooms and Dimensions:**
- SITTING: 25'2" x 13'1"
 - KITCHEN: 17' x 13'9"
 - DINING ROOM: 29' x 18' (CEILING HEIGHT: 9'4")
 - LIVING ROOM: 14'5" x 15'5"
 - MEDIA: 14'5" x 15'5"
 - FOYER: 14'7" x 12'6"
 - BEDROOM: 12'8" x 9'11"
 - BATH: 6' x 7'
 - PANTRY: 6' x 7'
 - CLOSET: 6' x 7'
 - CL: 6' x 7'
- Other Features:**
- BBQ
 - DECK
 - REF
 - FP
 - BOOKS
 - CL

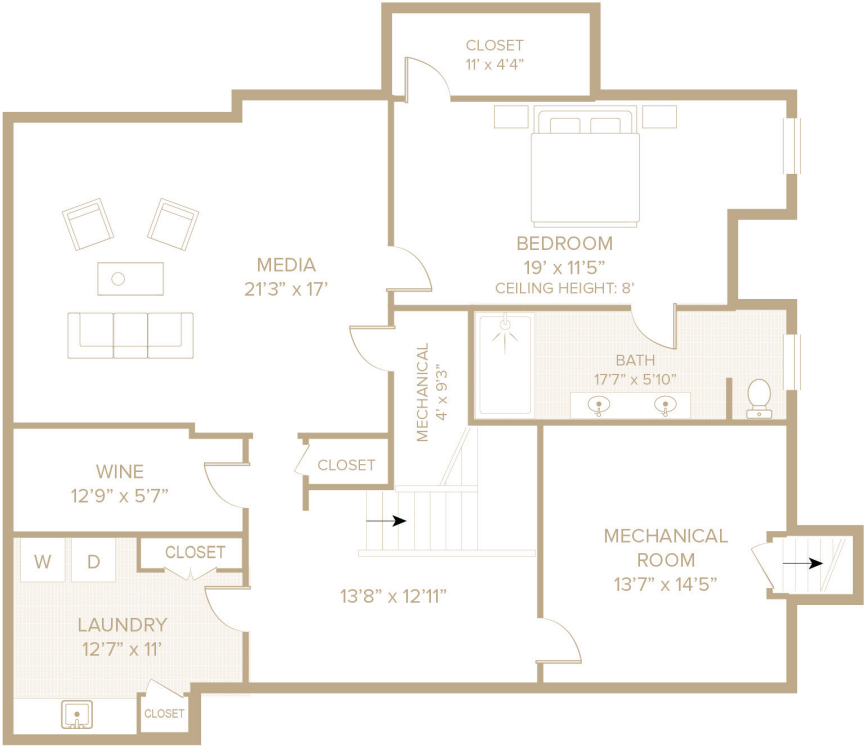
SECOND LEVEL

- 822 SF+/-
- Primary En-Suite Bedroom
 - Vaulted Ceiling
 - Gas Fireplace
 - Custom Cabinetry
 - Dual Walk-In Closets
 - French Doors to Private Terrace
- Primary En-Suite Bathroom
 - Dual Vanities
 - Soaking Tub
 - Walk-In Shower
 - Water Closet
- Office
 - Vaulted Ceiling
 - Dual Closets
 - Custom Built-In Shelving



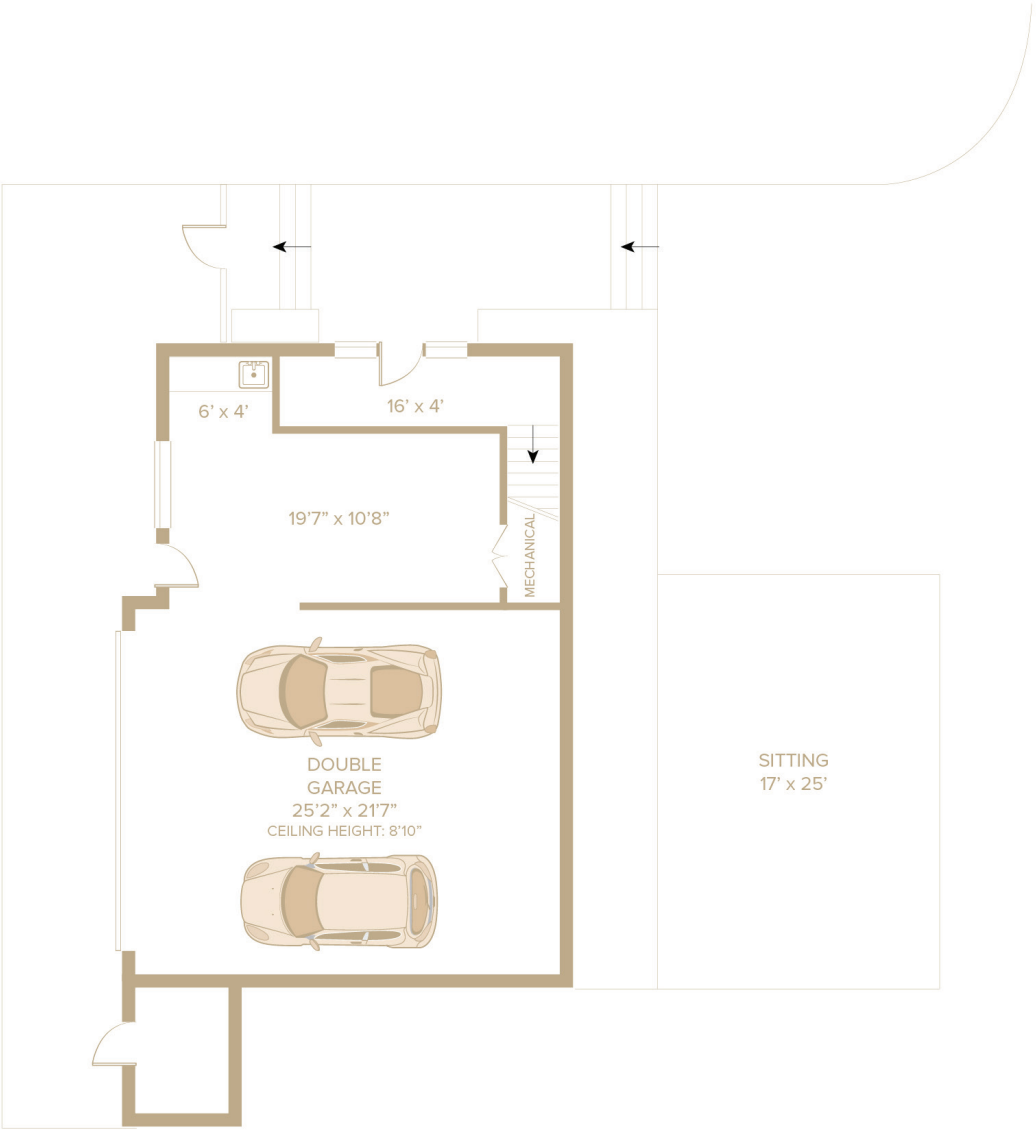
LOWER LEVEL

- 1,329 SF+/-
- Guest En-Suite Bedroom
- Laundry Room
- Wine Room
- Media Room
- Ample Storage Space
- Mechanical Room



DETACHED 2-CAR GARAGE
& LOFT

- Ground Level
 - 770 SF+/-
 - 2-Car Bays
 - Sink
 - Mechanical Closet



- Second Level
 - 716 SF+/-
 - Office
 - Lounge Area
 - Full Bathroom
 - Washer/Dryer
 - Ample Storage Space



POOL HOUSE

- Powder Room
- Outdoor Bar
- Outdoor Shower
- Pergola-Covered Dining Area
- Ample Storage Space

