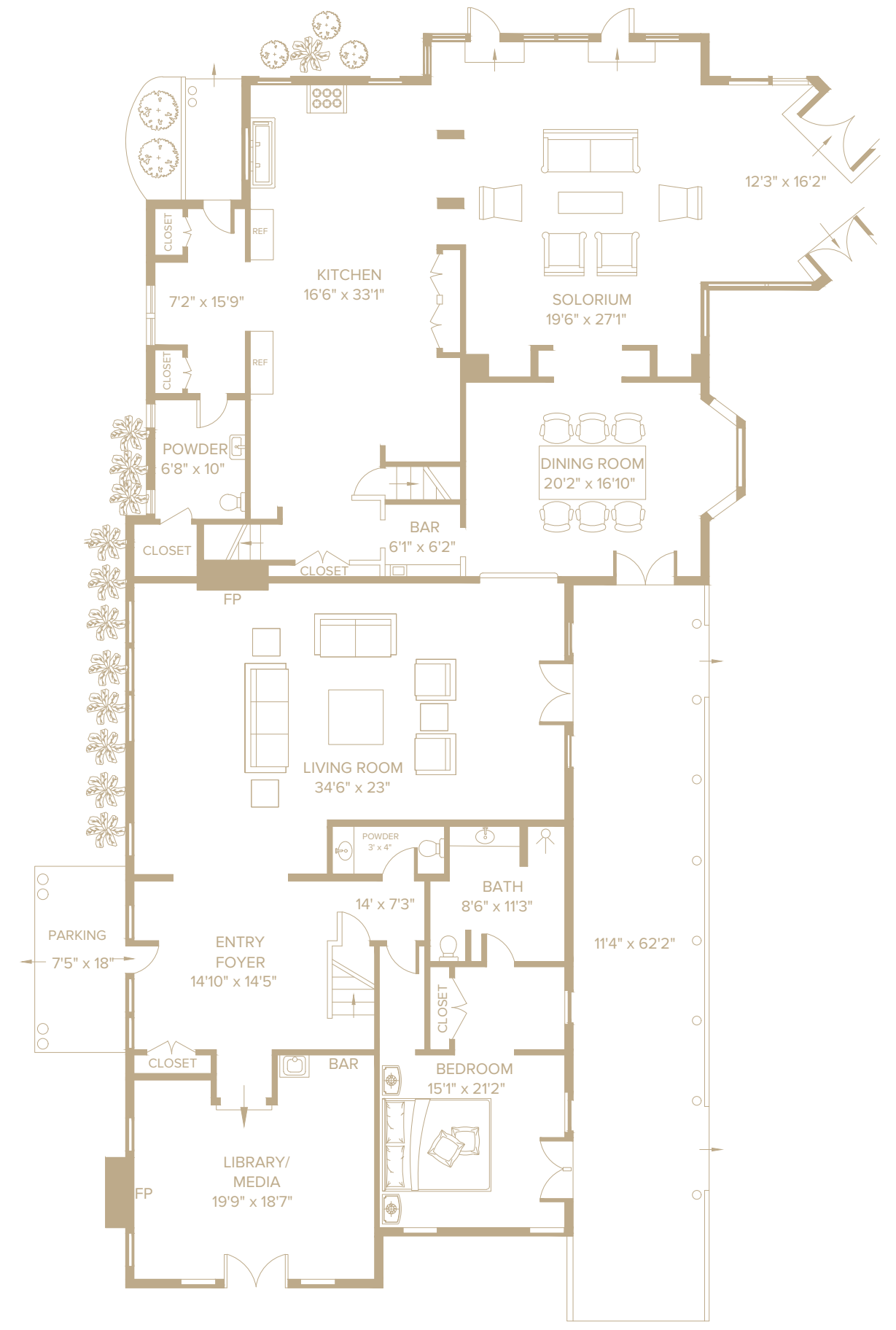


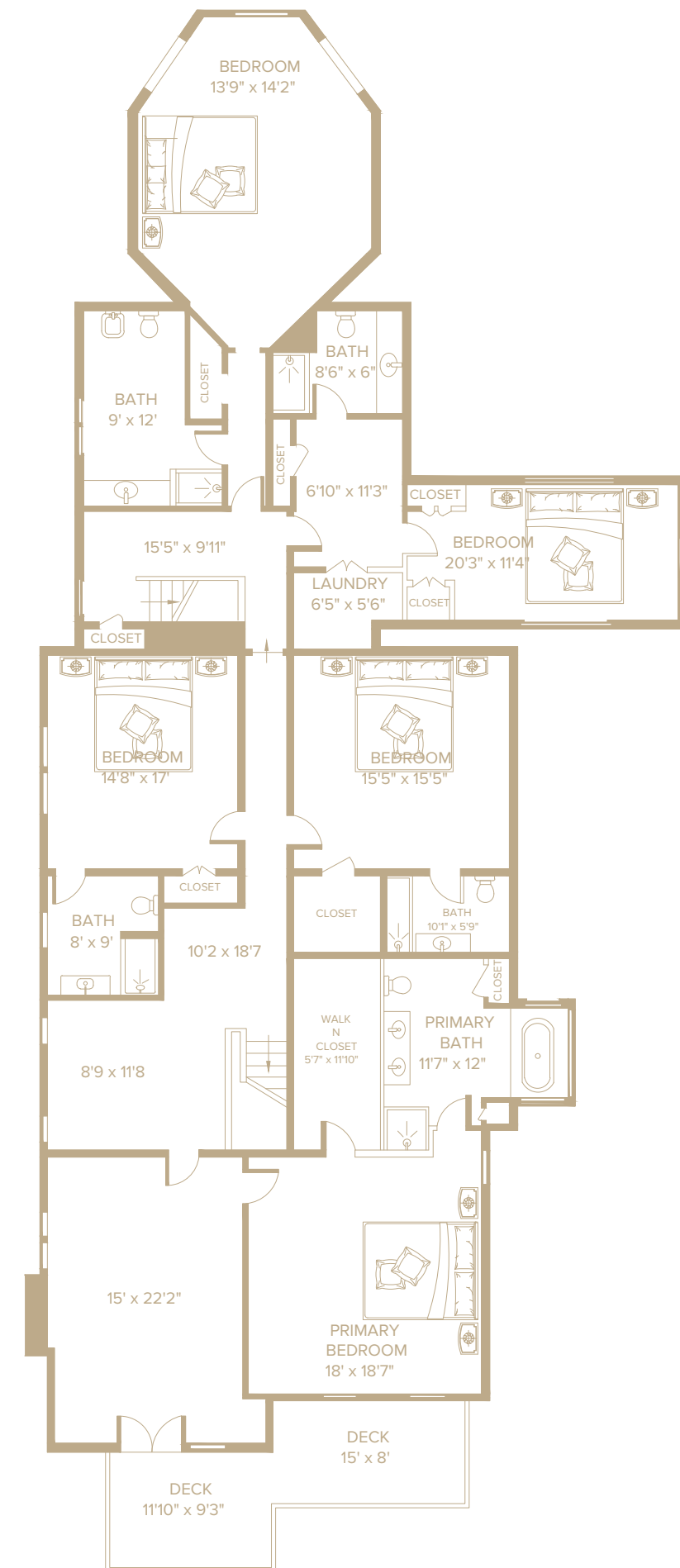
## FIRST LEVEL

- Entry Foyer
  - Coat Closet
  - 2 Refrigerators
  - 4 Closets
- Library/Media Room
  - Wood-Burning Fireplace
  - Fully Appointed Bar
  - Access to Outdoor Covered Patio
- Great Room/Sitting Area
  - Wood-Burning Fireplace
  - French Doors with Access to Outdoor Covered Patio
  - Doors Leading to Dining Room
- Powder Room
  - Tile Walls & Floors
  - Marble Countertops
- Junior Primary En-Suite Bedroom
  - French Doors with Access to Outdoor Covered Patio
  - Custom Millwork
  - 2 Dedicated Seating Areas
- Junior Primary En-Suite Bathroom
  - Tile Walls & Floors
  - Walk-In Shower with Frameless Glass Doors
  - Marble Countertop
- Professional Chef's Kitchen
  - Custom Cabinetry
  - Large Marble Center Island
  - Expansive Marble Countertops
  - Tile Floors
  - High-End Wolf Appliances
  - Pendant Light Fixtures
- Powder Room
  - 2 Refrigerators
  - 4 Closets
- Walk-In Closet
- Dining Room
  - French Doors with Access to Outdoor Covered Patio
  - Reading Nook
  - Abundant Natural Light
  - Custom Millwork
  - Direct Access to Solarium
- Solarium
  - Open-Concept Living/Dining
    - Direct Access to Kitchen & Dining Room
  - Abundant Natural Light
  - Multiple Dedicated Seating Areas
  - French Doors leading to Brick Stoop & Manicured Grounds
  - Impressive Pendant Light Fixtures
  - Wide-Plank Dark Wooded Floors
  - Large Columns



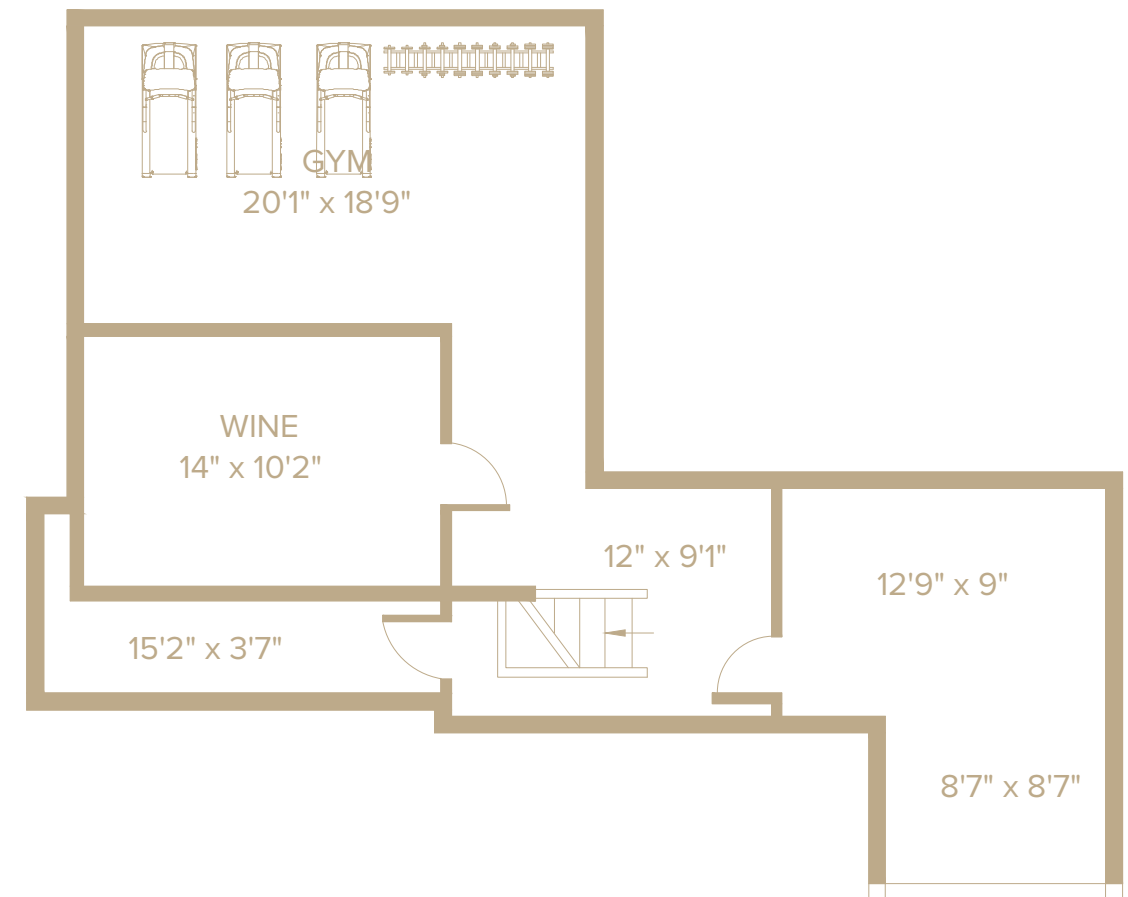
## SECOND LEVEL

- Upstairs Landing
- Lounge Area
- Office/Sitting Area
  - Wood-Burning Fireplace
  - Custom Shelving & Cabinetry
  - Lounge Area
  - Access to Second Level Terrace
- Primary Suite
  - Vaulted Ceiling
  - Abundant Natural Light
  - Multiple Dedicated Seating Areas
  - Southern & Eastern Exposures
  - Walk-In Closet
- Primary En-Suite Bathroom
  - High Ceilings
  - Soaking Tub
  - Marble Walls & Floors
  - Dual Vanities
  - Expansive Walk-In Shower
  - Storage Closet
- 4 En-Suite Guest Bedrooms
- Laundry Room



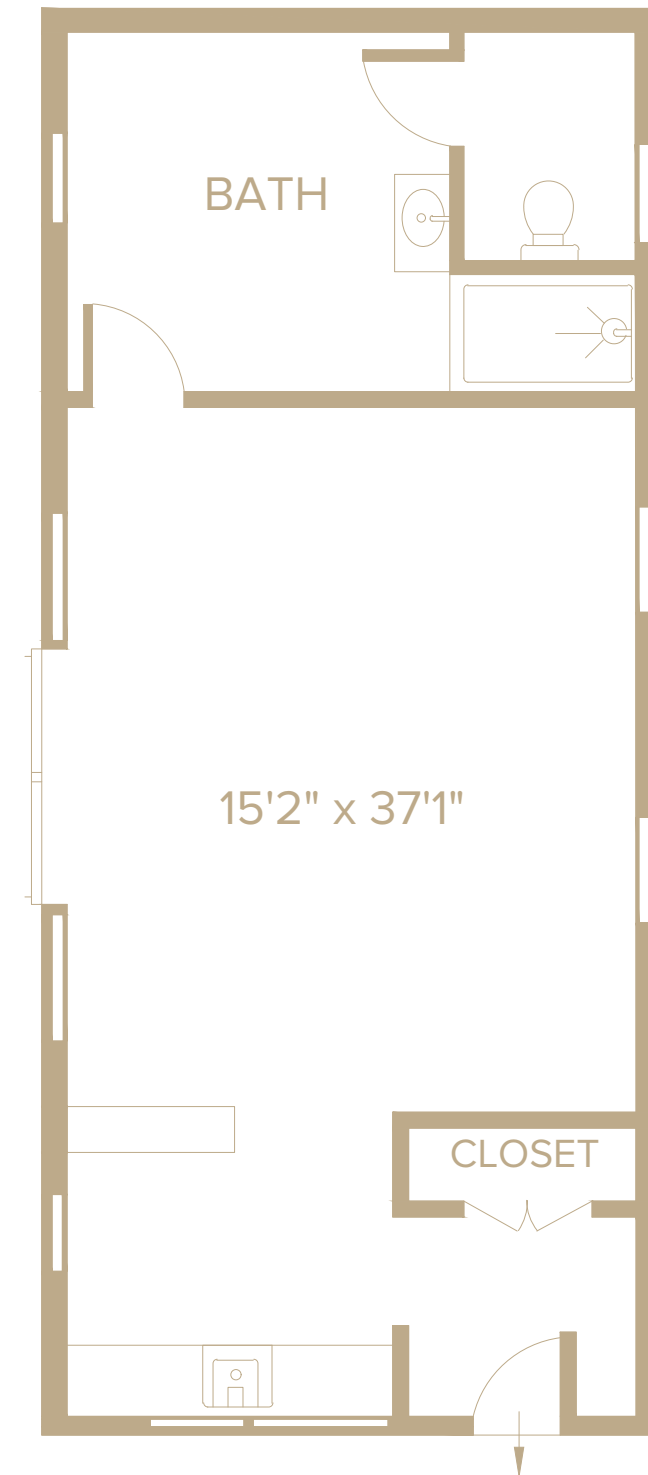
## LOWER LEVEL

- 10' x 12' Wine Room
- Private Gym with 7'6" Ceiling Height
- Recreational Living Space



## *POOL HOUSE*

- Shiplap Interiors
- French Doors
- Painted Brick Floors
- 17' Ceilings
- Abundant Natural Light
- Kitchenette with Marble Countertops
- Closet
- 1 Full Bathroom
- Brick Patio
- Covered Sitting Area
- Exposed Brick Wall



## *DETACHED 3-CAR GARAGE*

- Antique Brick Wall
- Storage Area
- Second Level Studio
  - 10' 5" Ceiling Heights
- 1 Full Bathroom
- Closet

