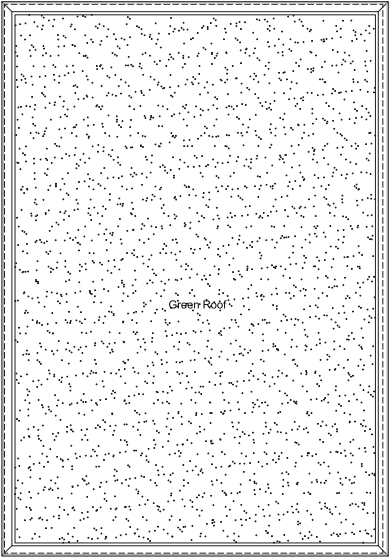
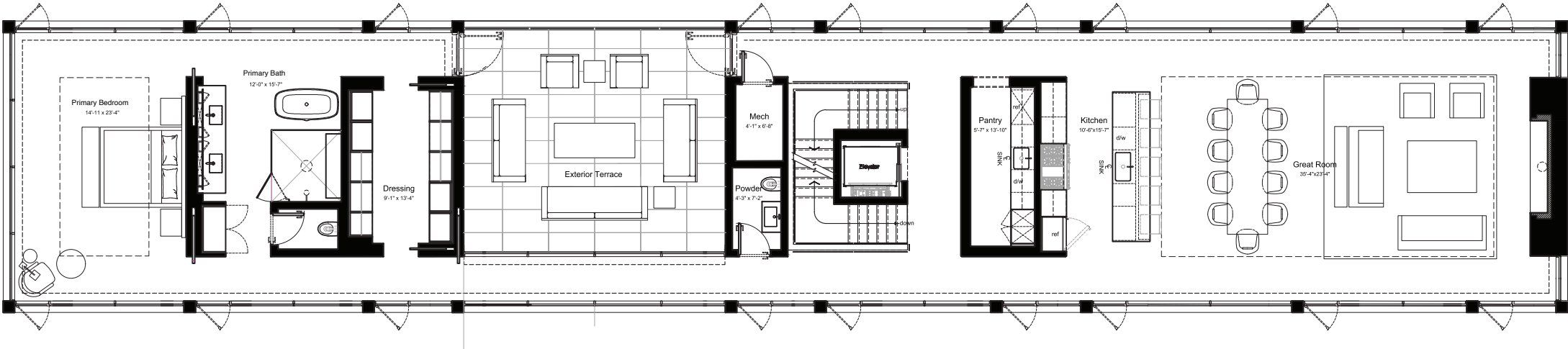


GROUND LEVEL FLOORPLAN

- 2,733 SF+/-
- 640 SF+/- Covered Terrace
- 4 Bedrooms with 3 Fixture En-suite's
- 795 SF+/- Detached 3-Car Garage
- Attached Pool House with:
 - Kitchenette with:
 - Ice Maker
 - Refrigerator
 - Sink
 - Dishwasher
 - 1 Bedroom with 3 Fixture En-suite's
- Full Bathroom
- Mechanical Room
- Elevator

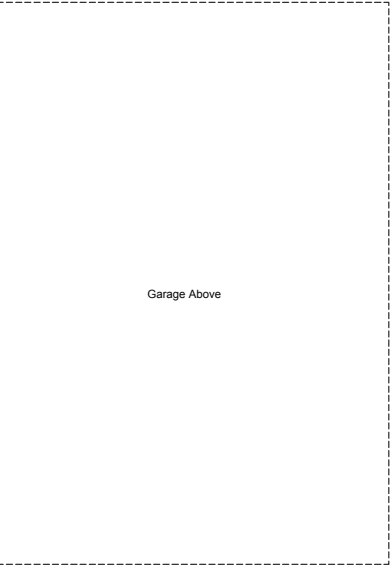
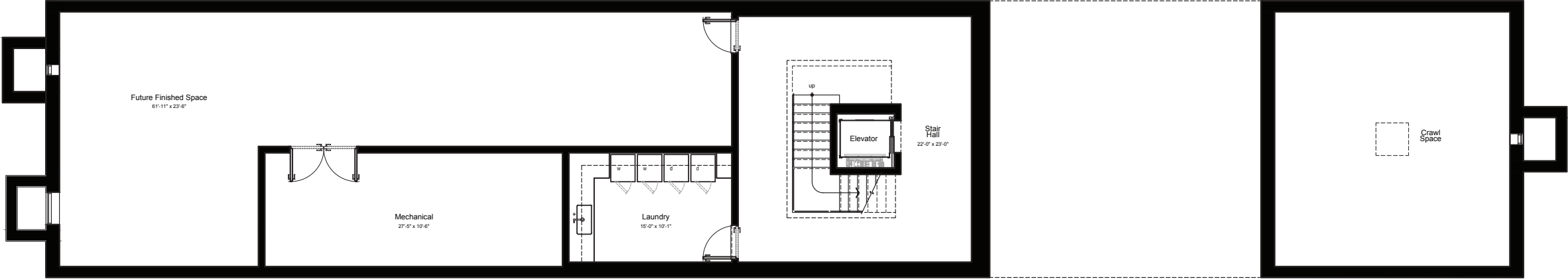
MAIN LEVEL
FLOORPLAN

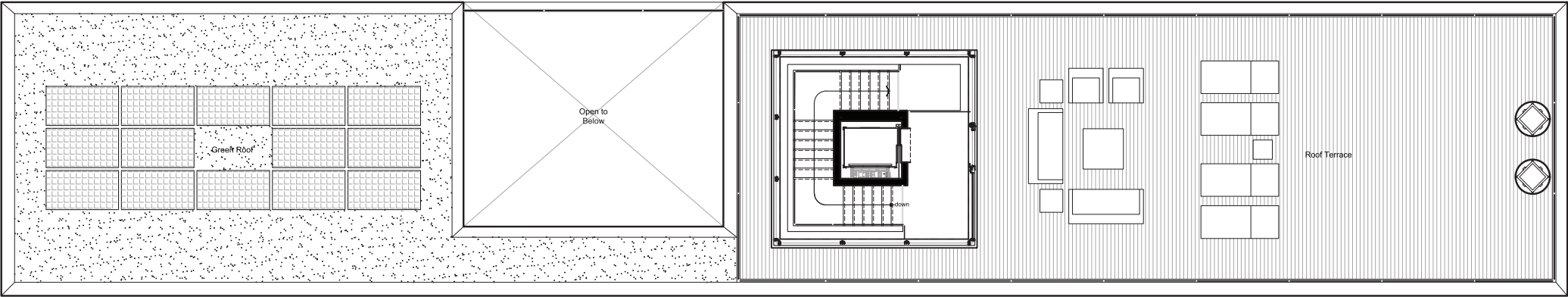
- 2,812 SF+/-
- Powder Room
- Pantry
- Chef's Kitchen with Large Center Island and Top-of-the-line Appliances
- Dining Area
- Great Room with Fireplace
- 445 SF+/- Exterior Terrace
- Primary Bedroom with 5 Fixture En-suite and Dressing Room
 - Dual Vanities
 - Soaking Tub
 - Shower
 - Water Closet
- Elevator



LOWER LEVEL
FLOORPLAN

- 1,283 SF+/-
- 8’ 8” Ceilings
- Elevator
- Laundry Room
- Storage Space

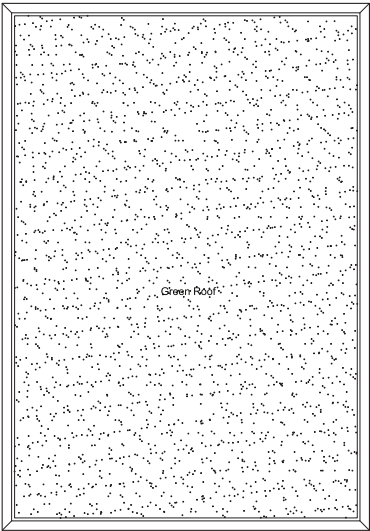


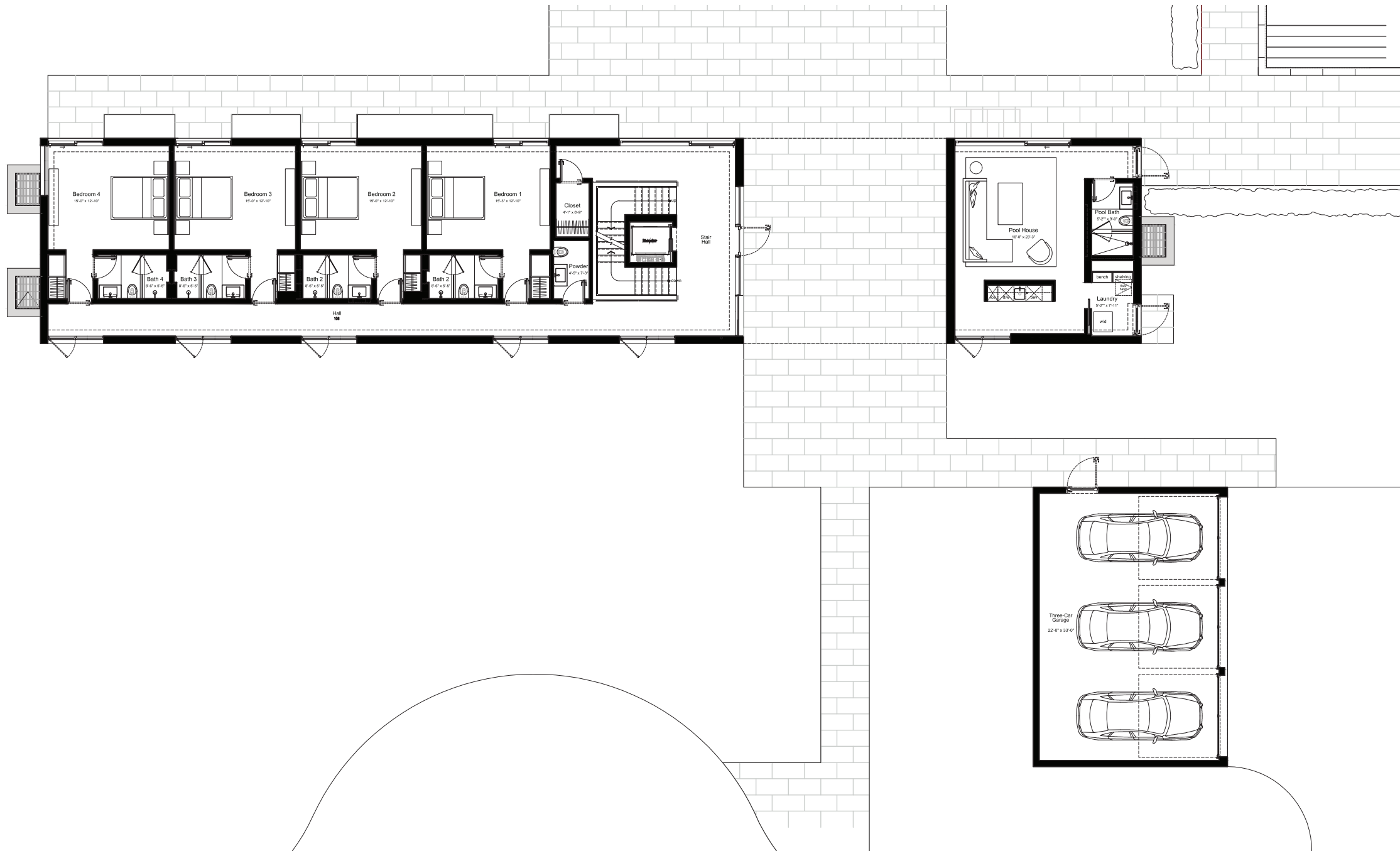


ROOFTOP VIEWING DECK

FLOORPLAN

- 1,340 SF+/- of Exterior Living Space
- Elevator





GROUND LEVEL ALTERNATE FLOORPLAN

- 2,733 SF+/-
- 640 SF+/- Covered Terrace
- 4 Bedrooms with 3 Fixture En-suite's
- 795 SF+/- Detached 3-Car Garage
- Attached Pool House with:
 - Kitchenette with:
 - Ice Maker
 - Refrigerator
 - Sink
 - Dishwasher
- Full Bathroom
- Mechanical Room
- Elevator