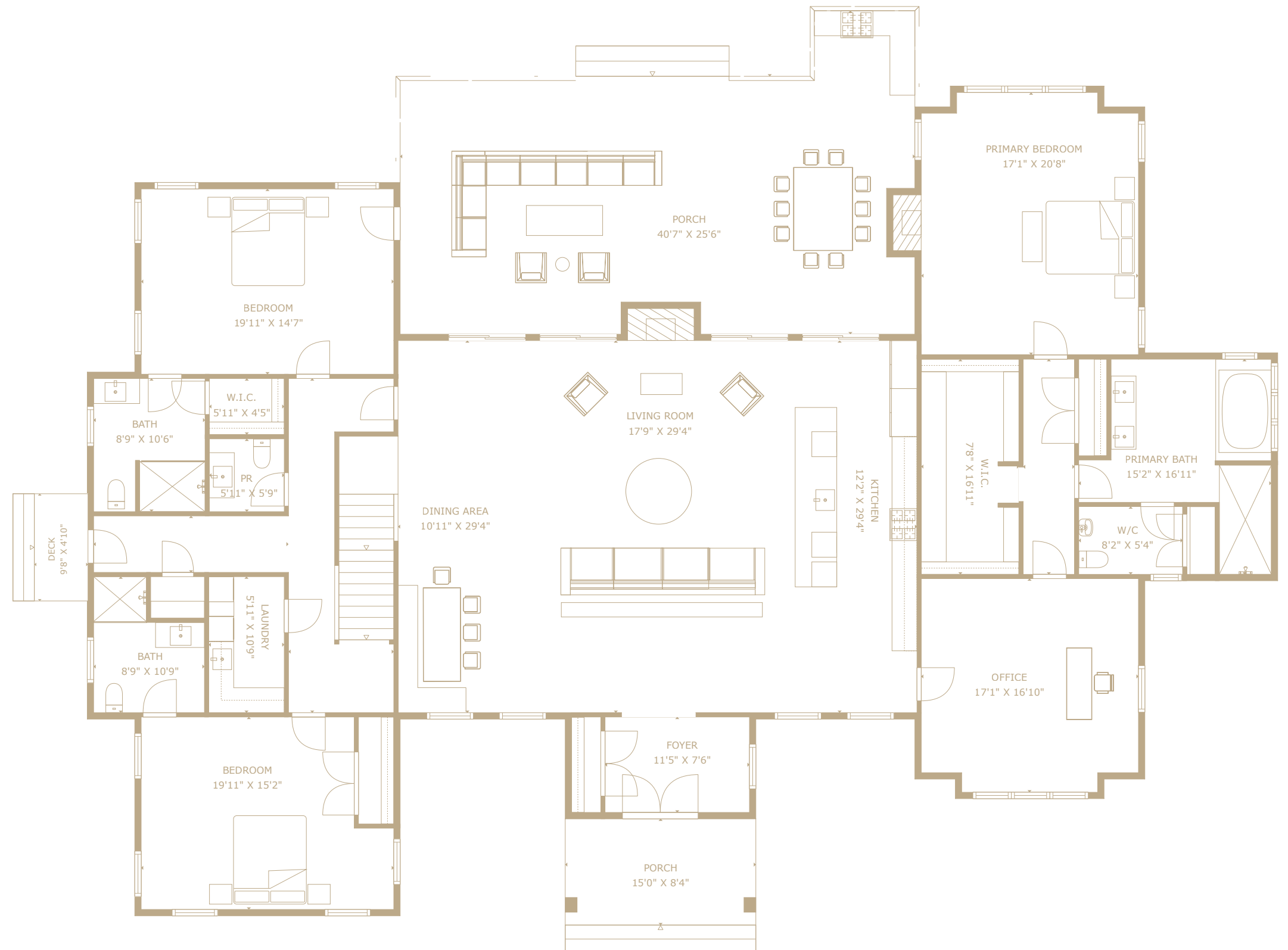


FIRST LEVEL

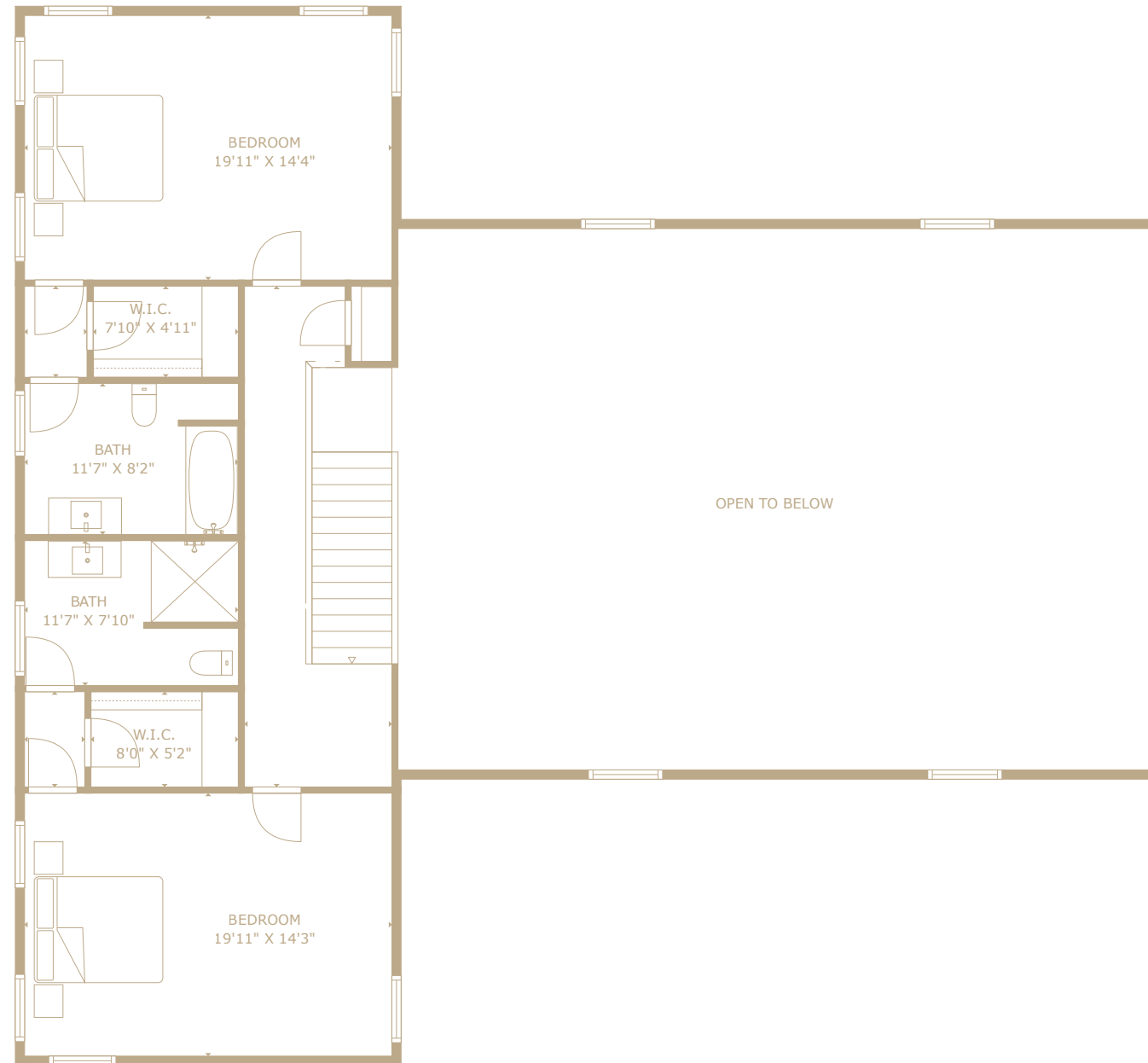
- Entry Foyer
 - Coat Closet
- Open-Concept Living, Dining, & Kitchen
 - Double-Height Ceilings
 - Exposed Beams
 - Sliding Glass Doors to Porch
 - Wood-Burning Fireplace
- Eat-In Kitchen
 - Large Center Island with Bar Seating
- Primary En-Suite
 - Wood-Burning Fireplace
 - Walk-in Closet
- Primary Bathroom
 - Soaking Tub
 - Walk-in Shower
 - Dual Sink Vanity
 - Water Closet
- Office
- 2 En-Suite Guest Bedrooms
- Powder Room
- Laundry Room



901 SEVEN PONDS TOWD ROAD,
SOUTHAMPTON, NY

SECOND LEVEL

- 2 En-Suite Guest Bedrooms



LOWER LEVEL

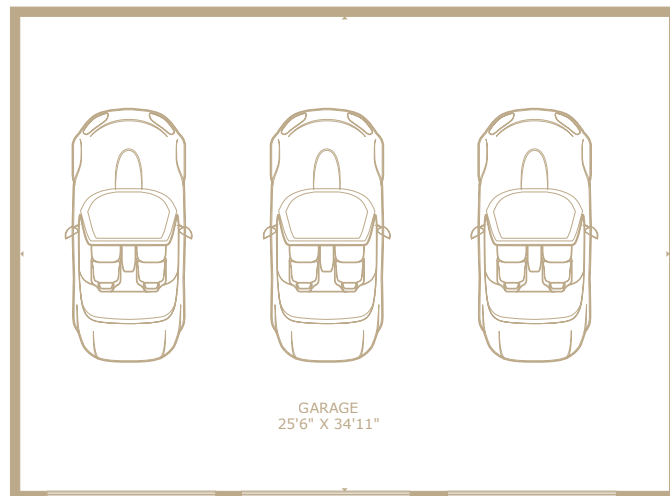
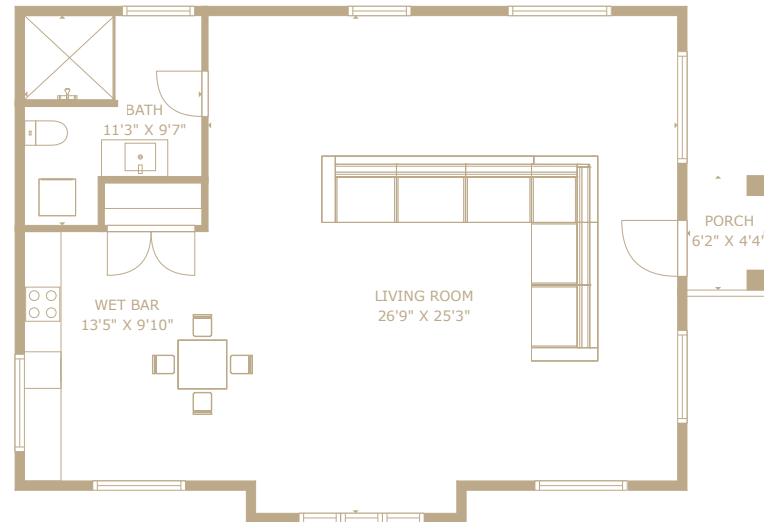
- Recreation Room
 - Wet Bar
- Wellness Center
 - Private Gym
 - Dry Sauna
 - Steam Shower
- 2 Bonus / Flex Rooms
 - 1 with Attached Full Bathroom
- Movie Theater
- Storage



901 SEVEN PONDS TOWD ROAD,
SOUTHAMPTON, NY

GUEST HOUSE / DETACHED 3-CAR GARAGE

- Upper Level
 - 1 Full Bathroom
 - Wet Bar
 - Living / Entertainment Space
 - Laundry
- Ground Level
 - 3-Car Garage



POOL HOUSE

- 1 Full Bathroom
- Laundry
- Pergola Covered Terrace

